

# CONTINENTAL OFFICE PARK

13343 BELLEVUE-REDMOND ROAD · BELLEVUE, WASHINGTON

OFFICE SPACE  
FOR SALE OR  
LEASE

9,231 RSF

AVAILABLE

AUGUST 2010  
(NEGOTIABLE)

CONTACT INFORMATION:

KATHERINE LAIRD  
(206) 757-8892

CAMPBELL MATHEWSON  
(206) 757-8893

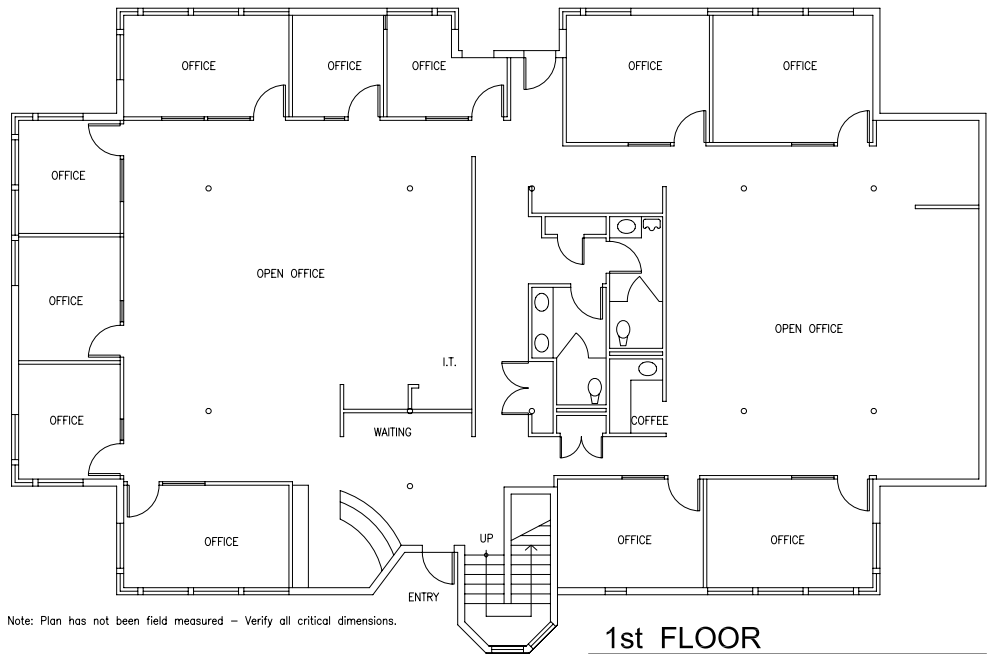


THE BUILDING

- 28,525 SF Lot
- Zoned Bel Red/OR 1 (45' / 150')
- Excellent Bellevue location along major bus lines
- Located only minutes from Marymoore Park and the Redmond Town Center with easy access to 1-405 and SR-520
- Abundant natural light throughout
- Enjoy park like settings and mature landscaping from the 2nd floor deck
- Tasteful, attractive finishes
- **\$2,500,000 Purchase Price**
- **\$18 NNN Rental Rate**

# CONTINENTAL OFFICE PARK

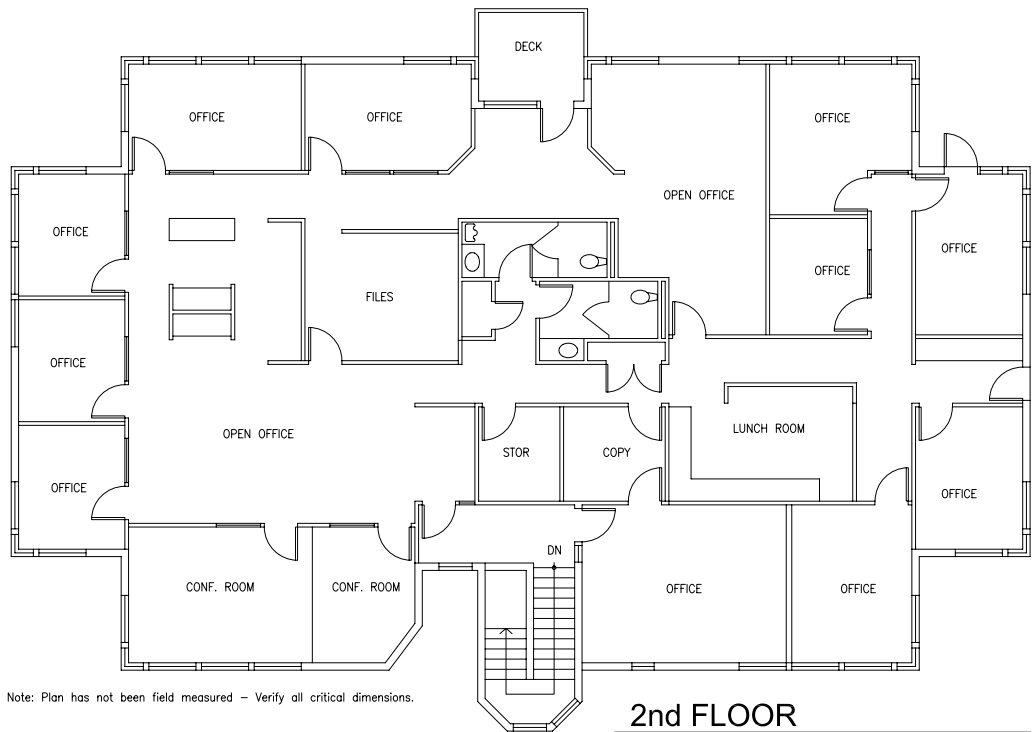
13343 BELLEVUE-REDMOND ROAD · BELLEVUE, WASHINGTON



Note: Plan has not been field measured - Verify all critical dimensions.

**1st FLOOR**

Scale: 1/8"=1'-0"



Note: Plan has not been field measured - Verify all critical dimensions.

**2nd FLOOR**

Scale: 1/8"=1'-0"

## CONTACT INFORMATION:

**KATHERINE LAIRD**  
(206) 757-8892

**CAMPBELL MATHEWSON**  
(206) 757-8893

[WWW.CENTURYPACIFICLP.COM](http://WWW.CENTURYPACIFICLP.COM)

# CONTINENTAL OFFICE PARK

13343 BELLEVUE-REDMOND ROAD · BELLEVUE, WASHINGTON

OFFICE SPACE  
FOR SALE OR  
LEASE

9,231 RSF

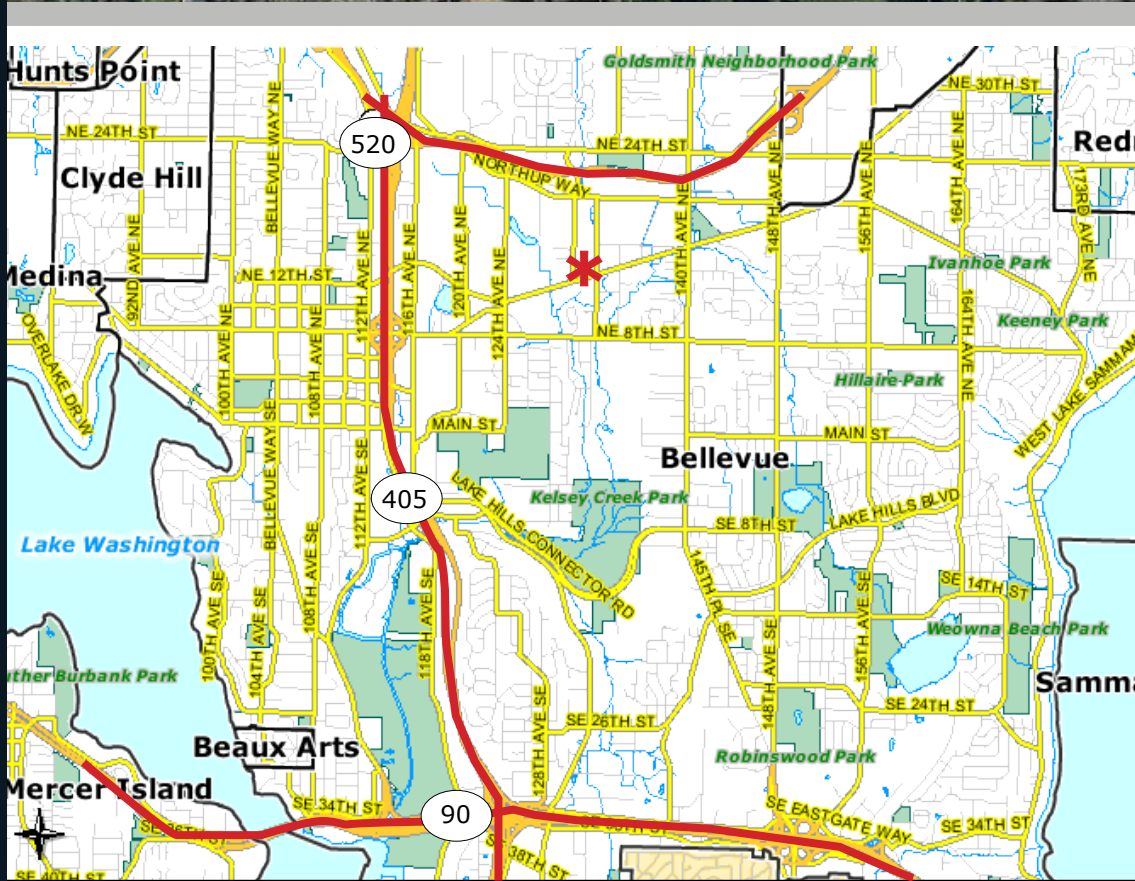
AVAILABLE

AUGUST 2010  
(NEGOTIABLE)

CONTACT INFORMATION:

KATHERINE LAIRD  
(206) 757-8892

CAMPBELL MATHEWSON  
(206) 757-8893



WWW.CENTURYPACIFICLP.COM