

Asbestos Northwest, LLC - Survey Report

30620 Pacific Hwy S, #103, Federal Way, WA 98003

253.941.4343



Survey Location: 2765 Rockefeller Ave Everett WA

Prepared for: Ascendent Demolition

Date: July 16th – 20th, 2020

Asbestos Northwest Batch Number: 202012857

Inspector: Sean Butler (#178317)

E-mail: seanb@asbestosnw.com





Contents

1. Background Information and Scope of Work	3
2. Building Description	4
Structural System	4
Finishing Materials	4
Mechanical system	4
Electrical system	5
Insulation	5
Roofing	5
3. Material Sampling Information.....	6
Definitions	6
Survey Methodology	6
4. Asbestos Containing Material.....	14
5. Conclusions	17
Appendix A – Certifications	19
Appendix B – Building Layout	21
Roof.....	31
Sample 6 Location	31
Sample 80 Location	32
1920’s Boiler Room.....	32
Appendix C – Laboratory Report.....	33

1. Background Information and Scope of Work

On July 16th – 20th 2020 Asbestos Northwest, LLC conducted a good-faith survey of the former YMCA complex located at 2765 Rockefeller Ave in Everett WA. AHERA-certified building inspector Sean Butler (#178317) conducted the survey to determine the presence of Asbestos Containing Materials (ACM's) prior to the partial demolition of the building to make way for redevelopment of the parcel.

The structure had been built in three distinct stages, although the internal arrangement and remodel work blurred the boundaries between these areas. The southern end of the complex dates to the 1920s. This was a five-story masonry structure, with dormitories on the top two floors, offices and classrooms on the middle two, and athletic facilities in the basement level. Additionally a large gymnasium was built off of the third floor. This portion of the structure will remain in place although the interior arrangement will be substantially altered.

The building was expanded to the north in the 1960's. This portion of the structure included a large gymnasium, offices, locker rooms, and a basement level swimming pool. Wrapping around the north side of this addition was another expansion constructed in the 1980's. This had an even larger gym and basement level swimming pool. The 1960's and 1980's portion of the complex will be demolished entirely to make way for new construction.

Materials in use within the building varied throughout. For the purposes of this inspection the 3 different eras of construction were considered to be distinct homogenous areas. Materials in use within each area were largely consistent, however the layout of the building and continued alteration of the space make it difficult to ascertain the full extent of any asbestos containing materials discovered.

Potential asbestos-containing materials were located and sampled from the interior and exterior of the building. See Appendix B for a detailed floor plan with sample locations.

Materials were located and sampled following AHERA protocol in 40 CFR 763.86, then analyzed in-house at Asbestos Northwest per 40 CFR 763.86. See section 3 for detailed sampling information.

2. Building Description

The original portion of the building was constructed in the 1920's and had seen extensive remodel work. The top two floors were configured as a dormitory and had been abandoned for several decades. Lower floors had been remodeled repeatedly although large quantities of original materials remained. The client intends to retain this portion of the structure although it will be reconfigured as a series of residential units.

Built onto the side of this structure was a series of expansions carried out in the 1960's and 1980's. These each contained a large gym and a lower level swimming pool, with offices, classrooms and locker rooms throughout the space. The internal layout was reflective of a history of ad hoc alterations and available plans did not accurately represent the layout. This structure will be demolished entirely.

Structural System

The original structure was of masonry construction and was a total of five stories tall. The overall original structure appeared largely intact although some changes to the internal layout had likely taken place.

The expansions of the 1960's and 1980's were of concrete construction. Vermiculite fill was present in some exterior walls.

Finishing Materials

Interior walls were plaster throughout the majority of the 1920's portion of the building although some areas of finished drywall were present. Ceilings were suspended grid of fibrous tiles in most areas, with plaster ceilings and sometimes additional fibrous tiles glued in place above. Floors were mostly asbestos containing vinyl tiles with carpet over the top. Windows lacked suspect glazing products.

The 1960's and 1990's areas were also mostly plaster walls with some areas of drywall. Floors were carpet over concrete in many areas although vinyl tiles were in place below in some rooms. Ceilings were the same as in the 1920's areas.

Mechanical system

The building had a total of four different mechanical spaces. The 1920's boiler room contained a large quantity of asbestos containing wrap, gaskets and cladding. This material was in some cases damaged and was visible throughout this floor of the building. It was also visible in the walls of the 4th and 5th floor dormitory areas and should be presumed to be in place throughout the building.

The large room associated with the 1980's remodel had no asbestos containing insulation products in place. The same held true for the pool mechanical room directly below this.

The 1960's pool mechanical room had a decommissioned boiler with asbestos containing insulation, and some asbestos containing pipe insulation was also present in this space.

Electrical system

The electrical system was live at the time of the inspection. Electrical panels were distributed throughout the building, mostly in the major mechanical spaces.

Insulation

Some fiberglass batts were seen. Vermiculite was present in the exterior walls of the 1980's expansion. The 1920's building appeared to be mostly uninsulated.

Roofing

The 1920's portion of the building had an asphaltic shingle roof facade with an asbestos containing paper visible at the gutters. The remainder of this portion of the building had a flat roof of asphaltic sheets.

The 1960's portion of the building had a roof of rolled asphalt. Asbestos containing sealant was visible on a ventilation duct just outside the 5th floor roof access window. This material was not seen elsewhere on the roof. The 198's portion of the building had sections of rolled asphaltic roofing and a rubberized non-slip coating, neither of which contained asbestos.

3. Material Sampling Information

Asbestos survey work performed by Asbestos Northwest meets inspection regulatory requirements enforced by federal, state, and local agencies, including Asbestos Hazard Emergency Response Act (AHERA), WAC 296-62-077 (WISHA) and 40 CFR Part 61 (NESHAP) and 29 CFR Part 1926.1101 (OSHA)

Definitions

Homogenous – Materials with the same appearance, texture, color, and which were applied during the same general construction period.

Surfacing Material – Material that has been sprayed-on, troweled-on or otherwise applied to surfaces, such as acoustical plaster, texture and joint compound, and fireproofing materials on structural members.

Thermal System Insulation – Material applied to pipes, fittings, boilers, breaching, ducts, and other interior structural components to prevent heat loss or gain.

Miscellaneous Material – Building materials such as structural components, structural members or fixtures not included in surfacing and thermal insulation.

Survey Methodology

Before sampling began, inspectors documented the total surveyed area. A sketch of each space was created, and total square footage was roughly measured. The inspectors then determined the extent of each visible homogenous material throughout the survey area.

Materials were classified as surfacing, thermal insulation, or miscellaneous material, and friability was assessed according to AHERA specifications.

Materials were sampled according to 40 CFR 763.86. Depending on homogeneity, square footage, and material type, the proper number of samples needed to accurately assess the location and extent of asbestos was determined and collected. At the point of collection, samples were placed in an appropriate container and labeled. Location was noted on the building floor plan, and a description of the material was recorded with the label number.

Sampling tools were then wiped clean to prevent contamination between samples. Any suspect debris was sealed. The samples were then counted, and their label numbers were recorded on a chain of custody form. The inspector then signed and released the form to the laboratory with the samples. Samples were analyzed in-house at Asbestos Northwest.

Below is a list of all materials sampled. Appendix C contains the laboratory report and analytical results for each sample.

Description	Material Type	Sample Numbers and Locations
Grey Non-Slip Coating	Non-Friable Miscellaneous Material	1- Rooftop Deck NE 2- Rooftop Deck NW
Layered Asphaltic Roofing	Non-Friable Miscellaneous Material	3- NE Roof by HVAC
Grey/Black Asphaltic Sealant	Non-Friable Miscellaneous Material	4- NE Roof Rampart Flashing
Grey Flexible Material	Non-Friable Miscellaneous Material	5- Rooftop Deck Pillar Trim
Gray Vinyl Tile and Black Mastic Asbestos Containing Mastic	Non-Friable Miscellaneous Material	6- Rooftop SW Stair Landing Floor
Texture	Friable Surfacing Material	7- Rooftop SW Stair Landing Ceiling 34- Lobby Office Wall 36- Middle East Office Wall 38- Break Room Wall 91- 5 th Floor NE Corner Room Wall 93- 5 th Floor East Room Wall 95- 5 th Floor South Room Wall 97- 5 th Floor SE Room Wall 126- 4 th Floor Hall Wall 128- 4 th Floor West Room Wall 138- 3 rd Floor SE Area Office Wall 141- 3 rd Floor Office Wall 153- 2 nd Floor SE Room Wall 167- 2 nd Floor Middle Classroom Wall 170- 2 nd Floor North Classroom Wall 173- 2 nd Floor Center Office Wall 184- Basement Fitness Office Wall
Fibrous Ceiling Tile	Friable Miscellaneous Material	8- Ping Pong Area Ceiling 26- Hallway Ceiling 46- Break Room Ceiling 73- Small Pool Hallway Ceiling 98- 5 th Floor Hall Ceiling 117- 4 th Floor Hall Ceiling 132- 3 rd Floor Tech Room Ceiling 155- 2 nd Floor Lobby Suspended Ceiling 162- 2 nd Floor Play Area Suspended Ceiling

Tan Vinyl Tile and Black Mastic	Non-Friable Miscellaneous Material	9- Ping Pong Area Floor
Plaster on Drywall	Friable Surfacing Material	10 – SE Court Wall 21- NW Office Wall 22- NW Meeting Room Wall
Plaster	Friable Surfacing Material	11- East South Court Wall 14- Middle Court Wall 16- Yoga Court Wall 17- SW Court Wall 24- Tech Area Wall 25- Hallway Wall 42- Hall by Locker Room Wall 84- 5 th Floor NW Room Wall 85- 5 th Floor East Room Ceiling 86- 5 th Floor Bath Ceiling 87- 5 th Floor West Room Wall 88- 5 th Floor Stairwell Wall 110- 4 th Floor West Room Wall 111- 4 th Floor Hall Wall 112- 4 th Floor SE Room Wall 113- 4 th Floor Bathroom Ceiling 114- 4 th Floor East Mid Room Wall 115- 4 th Floor East North Room Wall 116- 4 th Floor North Corner Room 131- 3 rd Floor Conference Room Wall 136- 3 rd Floor SE Corner Room Wall 142- 3 rd Floor East Mid Office Wall 143- 3 rd Floor East North Office Wall 144- 3 rd Floor N/S Hall Wall 145- 3 rd Floor North Hall Wall 154- 2 nd Floor Lobby Wall 158- 2 nd Floor Kitchen Wall 159- 2 nd Floor Kitchen Lobby Wall 161- 2 nd Floor Stage Wall 168- 2 nd Floor Middle Classroom Ceiling 172- 2 nd Floor North Classroom Wall 180- Basement SW Corner Office 186- Basement Fitness Office Ceiling
Tan Mastic	Non-Friable Miscellaneous Material	12- East Instruction Area Wall Mirrors
Black Mastic	Non-Friable Miscellaneous Material	13- East Instruction Area Seating Mats

Red Floor Coating	Non-Friable Miscellaneous Material	15- NE Court Floor
Cove Base Mastic	Non-Friable Miscellaneous Material	18- Ping Pong Area Wall 27 – 60's Gym Entrance Lobby 32- 60's Gym Cove Base 35- Lobby Office Wall 41- Hall by Locker Room Entrance 43- Hall by East Stairs 47- 80's Gym Wall 139- 3 rd Floor Hall Wall 176- 2 nd Floor Play Area Wall 178- 20's Pool Area Wall
Yellow Insulation and White Foil Wrap	Friable Thermal Systems Insulation	19- Ping Pong Area Ceiling Pipe 20- Ping Pong Area Ceiling Pipe 31- 60's Gym Ceiling Duct 58- Central Vertical Pipe in Mech Room 60- S Large Boiler in Mech Room 61- Overhead Pipe by Mech Room Door 63- Mezzanine South Elbow 64- Pool Mech Room South Pipe 77- Small Pool Mech Room North Pipe 195- Central Vertical Pipe
Mastic on Ceramic Tile	Non-Friable Miscellaneous Material	23- Mens Bathroom Wall
Green and White Vinyl Tiles and Black Mastic Tile and Mastic Asbestos Containing	Non-Friable Miscellaneous Material	28- 60's Gym Small Office Floor 133- 3rd Floor Tech Room Lobby
Fibrous Ceiling Tile and Mastic	Non-Friable Miscellaneous Material	29- 60's Gym Ceiling 156- 2 nd Floor Lobby Original Ceiling 177- 2 nd Floor Play Area Original Ceiling
Brown Fibrous Board with Black Coating	Non-Friable Miscellaneous Material	30- 60's Gym Under Floor
Joint Compound	Friable Surfacing Material	33- Lobby Office Wall 37- North East Office Wall 39- Store Room Wall 127- 4 th Floor West Room Wall 137- 3 rd Floor SE Area Office Wall 140- 3 rd Floor Office Wall 152- 2 nd Floor SE Room Wall 166- 2 nd Floor Middle Classroom Wall 171- 2 nd Floor North Classroom Wall

		174- 2 nd Floor Center Office Wall 185- Basement Fitness Office Wall
Green Vinyl Tile and Black Mastic Tile and Mastic Asbestos Containing	Non-Friable Miscellaneous Material	40- Store Room Floor 82- 5th Floor NE Room Floor 107- 4th Floor SW Room Floor 183- Basement Fitness NE Area Floor
Brown Vinyl Tile and Black Mastic Tile and Mastic Asbestos Containing	Non-Friable Miscellaneous Material	44- Hall by Locker Room Entrance 81- 5th Floor Hall Floor 109- 4th Floor East Hall Floor
Mortar on Ceramic Tile	Non-Friable Miscellaneous Material	45- Mens Locker Room Wall
White Fire Proofing	Friable Thermal Systems Insulation	48- 80's Gym SW Ceiling 49- 80's Gym West Ceiling 50- 80's Gym NW Ceiling 51- 80's Gym North Ceiling 52- 80's Gym NE Corner Ceiling 53- 80's Gym East Ceiling 54- 80's Gym SE Corner Ceiling
Black Stair Tread and Mastic	Non-Friable Miscellaneous Material	55- NW Corner Stairs
Gray Vinyl Tile and Black Mastic Mastic Asbestos Containing	Non-Friable Miscellaneous Material	56- NW Maintenance Office Floor
Silver Sealant	Non-Friable Miscellaneous Material	57- West Wall Ducting in Mech Room
Yellow Insulation and White Plastic	Friable Thermal Systems Insulation	59- W Wall Small Elbow in Mech Room
Black Rubbery Material	Non-Friable Miscellaneous Material	62- Mezzanine Duct Bellows
White Brittle Material	Friable Thermal Systems Insulation	65- Pool Mech Room South Elbow 104- 5 th Floor Kitchen Wall 106- 5 th Floor Utility Room Pipe Elbow 120- 4 th Floor Bathroom Pipe Elbow 123- 4 th Floor Utility Closet Pipe Elbow 196- Center Vertical Pipe Elbow
Drywall Ceiling Tile	Non-Friable Miscellaneous Material	66- Pool Ceiling over Spa

Yellow Foam Insulation and White Cover	Friable Thermal Systems Insulation	67- Pool Ceiling Noise Baffles
White Fire Proofing Asbestos Containing	Friable Thermal Systems Insulation	68- Small Pool Ceiling SE 69- Small Pool Ceiling SW 70- Small Pool Ceiling NW 71- Small Pool Ceiling NE 72- Small Pool Ceiling Over Entrance
White Woven Bellows	Friable Thermal Systems Insulation	74- Small Pool Mech Room Bellows
White Brittle Material Asbestos Containing	Friable Thermal Systems Insulation	75- Small Pool Mech Room Boiler 76- Small Pool Room South Elbow 188- Large Pipe Down To N Boiler 189- East Large Pipe
Vermiculite Asbestos Containing	Friable Thermal Systems Insulation	78- Wall Outside Main Mechanical Room 79- North Wall of 80's Gym
White Woven Paper Asbestos Containing	Friable Miscellaneous Material	80- Roof of 20's Building Under Flashing
Red Vinyl Tile and Black Mastic Tile and Mastic Asbestos Containing	Non-Friable Miscellaneous Material	83- 5th Floor NE Room Floor 108- 4th Floor South Mid Room 164- 2nd Floor Stage 169- 2nd Floor North Classroom
Tar Paper	Non-Friable Miscellaneous Material	89- 5 th Floor Below Kitchen Floor
Joint Compound Asbestos Containing	Friable Surfacing Material	90- 5th Floor Hall Wall 92- 5th Floor NE Big Room Wall 94- 5th Floor SW Room Wall 96- 5th Floor S Mid Room Wall 125- 4th Floor Hall Wall 129- 4th Floor Common Wall
Woven Wiring Insulation	Non-Friable Miscellaneous Material	99- 5 th Floor Bathroom Wall 100- 5 th Floor Bathroom Wall 101- 5 th Floor Bathroom Wall 119- 4 th Floor Bathroom 194- Basement Small Utility Office
Tar Paper Asbestos Containing	Non-Friable Miscellaneous Material	102- 5th Floor Bathroom Door Opening
Yellow Backsplash and Mastic	Non-Friable Miscellaneous Material	103- 5 th Floor Kitchen Counter

Yellow Insulation	Friable Thermal Systems Insulation	105- 5 th Floor Utility Room Pipe 121- 4 th Floor Bathroom Wall Pipe 122- 4 th Floor Utility Closet Pipe
Black Asphaltic Paint on Wood	Non-Friable Miscellaneous Material	118- 4 th Floor Window Opening
Gray Corrugated Pipe Wrap Asbestos Containing	Friable Thermal Systems Insulation	124- 4th Floor Small Bathroom Wall Pipe 179- 20's Pool Area South Hall 190- Horizontal Pipe over S Door
Texture Asbestos Containing	Friable Surfacing Material	130- 4th Floor Common Room Wall
Plaster Asbestos Containing	Friable Surfacing Material	134- 3rd Floor Conference Room Wall
White Woven Carpet Pad	Non-Friable Miscellaneous Material	135- 3 rd Floor Conference Room Floor
Layered Vinyl	Non-Friable Miscellaneous Material	146- 3 rd Floor Middle Stairwell Wall
Mastic on Flexible Coating	Non-Friable Miscellaneous Material	147- 3 rd Floor Middle Stair Tread
Tan Vinyl Tile and Black Mastic Tile and Mastic Asbestos Containing	Non-Friable Miscellaneous Material	148- 3rd Floor East North Office Floor 175- 2nd Floor Small Center Office Floor 181- Basement Lobby Floor
Dark Tan Vinyl Tile and Black Mastic Tile and Mastic Asbestos Containing	Non-Friable Miscellaneous Material	149- 3rd Floor North Office Floor
Light Gray Vinyl Tile and Black Mastic Tile and Mastic Asbestos Containing	Non-Friable Miscellaneous Material	150- 3rd Floor Bathroom Floor
Layered Vinyl and Brittle Material Asbestos Containing Brittle Material	Non-Friable Miscellaneous Material	151- 2nd Floor SE Room Floor
Vinyl Tile, Mastic and Brittle Material All Asbestos Containing	Non-Friable Miscellaneous Material	157- 2nd Floor Lobby Office Floor 160- 2nd Floor Play Room Floor 163- 2nd Floor Play Area NE Floor 165- 2nd Floor Office Outside Classroom

Yellow Mastic and Black Mastic Remnant Black Mastic Asbestos Containing	Non-Friable Miscellaneous Material	182- Basement Fitness SW Floor
Tan and Red Vinyl Tiles and Black Mastic Tile and Mastic Asbestos Containing	Non-Friable Miscellaneous Material	187- Basement Fitness North Hall Floor
Tan Brittle Sealant	Friable Miscellaneous Material	191- South Boiler Back Door Seal
Woven Grey Gasket Asbestos Containing	Friable Thermal Systems Insulation	192- N Boiler Back Door Gauge
Gray Fibrous Insulation	Friable Thermal Systems Insulation	193- North Boiler Under Cladding
Asphaltic Shingle	Non-Friable Miscellaneous Material	197- South Roof Edge
Rolled Asphaltic Roofing	Non-Friable Miscellaneous Material	198- South Flat Roof 199- 20's Gym Roof NE 200- 20's Gym Roof West 201- 60's Roof East 202- 60's Roof SW
Gray Brittle Window Glazing	Non-Friable Miscellaneous Material	203- HVAC Doghouse Window
Gray Asphaltic Sealant Asbestos Containing	Non-Friable Miscellaneous Material	204- HVAC South Duct Sealant

4. Asbestos Containing Material

A homogenous material is considered ACM (Asbestos Containing Material) if one or more samples of the material are found to have greater than 1% asbestos. Analysis can result in both positive and negative conclusions in materials containing less than 10% asbestos, or materials that have very fine asbestos fibers, have been hand mixed, or have asbestos fibers tightly bound in the matrix; therefore, EPA recommends a minimum of three samples be analyzed by PLM for these types of materials. All materials that were sampled during the inspection were analyzed under PLM, EPA Method 600/R-93/116.

Laboratory results show that fifty-three of the samples taken contained asbestos.

See chart on next page.

Description and Asbestos Type	Material Type and Estimated Quantity	Locations
Black Mastic	Non-Friable Miscellaneous Material See Conclusions	6- Rooftop SW Stair Landing Floor.
Vinyl Tile and Black Mastic 3-5% Chrysotile Asbestos	Non-Friable Miscellaneous Material See Conclusions	40- Store Room Floor 82- 5th Floor NE Room Floor 107- 4th Floor SW Room Floor 183- Basement Fitness NE Area Floor 44- Hall by Locker Room Entrance 81- 5th Floor Hall Floor 109- 4th Floor East Hall Floor 56- NW Maintenance Office Floor 83- 5th Floor NE Room Floor 108- 4th Floor South Mid Room 164- 2nd Floor Stage 169- 2nd Floor North Classroom 148- 3rd Floor East North Office Floor 175- 2nd Floor Small Center Office Floor 181- Basement Lobby Floor 149- 3rd Floor North Office Floor 150- 3rd Floor Bathroom Floor 187- Basement Fitness North Hall Floor
Brittle Underlayment 3% Chrysotile Asbestos	Non-Friable Miscellaneous Material See Conclusions	151- 2 nd Floor SE Room Floor
Vinyl Tile and Black Mastic with Brittle Underlayment 3-5% Chrysotile Asbestos	Non-Friable Miscellaneous Material See Conclusions	157- 2nd Floor Lobby Office Floor 160- 2nd Floor Play Room Floor 163- 2nd Floor Play Area NE Floor 165- 2nd Floor Office Outside Classroom
White Fireproofing 8% Chrysotile Asbestos	Friable Thermal Systems Insulation ~3600ft ²	68- Small Pool Ceiling SE 69- Small Pool Ceiling SW 70- Small Pool Ceiling NW 71- Small Pool Ceiling NE 72- Small Pool Ceiling Over Entrance

White Brittle Pipe Coating 8-55% Chrysotile Asbestos	Friable Thermal Systems Insulation	75- Small Pool Mech Room Boiler 76- Small Pool Room South Elbow
White Brittle Pipe Coating 40% Chrysotile, Amosite	Friable Thermal Systems Insulation	188- Large Pipe Down To N Boiler 189- East Large Pipe
Vermiculite <1% Tremolite, Actinolite	Friable Miscellaneous Material	78- Wall Outside Main Mechanical Room 79- North Wall of 80's Gym
White Woven Paper 5% Chrysotile Asbestos	Friable Thermal Systems Insulation	80- Roof of 20's Building Under Flashing
Joint Compound Composited to <1% Chrysotile Asbestos	Friable Surfacing Material	90- 5th Floor Hall Wall 92- 5th Floor NE Big Room Wall 94- 5th Floor SW Room Wall 96- 5th Floor S Mid Room Wall 125- 4th Floor Hall Wall 129- 4th Floor Common Wall
Tar Paper 15% Chrysotile Asbestos	Non-Friable Miscellaneous Material ~12ft ²	102- 5th Floor Bathroom Door Opening
Corrugated Pipe Wrap 20-70% Chrysotile Asbestos	Friable Thermal Systems Insulation	124- 4th Floor Small Bathroom Wall Pipe 179- 20's Pool Area South Hall 190- Horizontal Pipe over S Door
Texture Point Counted to <1% Chrysotile Asbestos	Friable Surfacing Material	130- 4th Floor Common Room Wall
Plaster Point Counted to <1% Chrysotile Asbestos	Friable Surfacing Material	134- 3rd Floor Conference Room Wall
Woven Grey Gasket 60% Chrysotile Asbestos	Friable Thermal Systems Insulation 1ft ²	192- N Boiler Back Door Gauge
Asphaltic Gray Sealant 2% Chrysotile Asbestos	Non-Friable Miscellaneous Material See Conclusions	204- HVAC South Duct Sealant

5. Conclusions

Within the 1960's and 1980's portions of the building asbestos containing materials were relatively minimal.

Vermiculite fill was present in the exterior walls of this section and was sampled from the first floor north and west walls.

Vinyl tiles and the associated mastic were found to contain asbestos. These were found in the hall outside the first floor locker rooms, as well as a nearby store rooms and the north west mechanical room office and the northwest stairwell. This represents a total of roughly 750ft² of these materials in this portion of the building. Vinyl tiles and black mastic in the third floor gym spaces and offices were asbestos free.

The boiler wrap and some pipe elbows in the mechanical room for the small pool were found to contain asbestos. This material is in a room directly to the west of the pool and north of the 1920's building mechanical room. No other TSI sampled from the 1960's and 1980's portion of the building contained asbestos.

The small pool room had an asbestos containing fireproofing on the ceiling. Roughly 3,600ft² of this material were present. The large gym had a fireproofing material in place that was asbestos free.

Large quantities of asbestos containing material are present in the 1920's portion of the structure.

Vinyl tiles and black mastic found throughout the 1920's portion of the building contained asbestos. The 4th and 5th floor contained a total of roughly 10,000ft² of these materials. A further 2,500ft² was found on the 3rd floor. These materials were also found almost everywhere on the 2nd floor for a total of roughly 10,000ft². There were an additional roughly 5,000ft² of this material present in the basement portion. Total VCT and mastic though the 1920's portion of the building was roughly 27,000ft².

Additionally, a black or dark red brittle underlayment was in place below these tiles on the 2nd floor of the building. This material also contained asbestos and should be assumed to be in place below the full 10,000ft² of VCT and mastic on this floor.

A large quantity of asbestos containing TSI were found in this portion of the building. This included gaskets, elbows, corrugated wrap and paper on both the boilers and ducting in the mechanical room. This material was in damaged condition and had been disturbed in

a number of locations. These materials were also found on pipework in the rest of the basement area and on the 4th and 5th floor of the building and likely elsewhere in the building. **The total quantity of these materials is unknown but they are extensive.**

A tar paper product was in place in the door openings to the 4th and 5th floor bathroom units. This appeared to be a vapor barrier. It was visible on the 5th floor but should be assumed to be in place on the identical appearing 4th floor bathroom.

Some joint compound samples from the 4th and 5th floor were found to contain asbestos. This material was only found on this floor and appeared to be the result of later repair work. **This material was composited with the underlying drywall in order to arrive at an asbestos content of less than one percent.**

One sample of texture and one sample of plaster were found to contain asbestos. These samples were point counted at client request and found to contain less than one percent asbestos by this analytical method.

Most roofing samples were asbestos free. **However an asbestos containing tar paper product was in place on the roof sampled from behind the gutters at the rear of the 5th floor dormitories.** This material was not found elsewhere on the roof. **An asphaltic sealant on a ventilation duct in the same area contained asbestos.** This material was not seen elsewhere on the roof.


All other materials sampled were asbestos free. Materials in use were relatively simple and consistent throughout the space. The home lacked many suspect building materials that would be encountered in a traditionally constructed residence.

Any identified asbestos containing material must be abated before demolition can continue. A Certified Asbestos Abatement Contractor must carry out abatement.

Different materials require different abatement processes depending on the friability, type of asbestos, and amount of asbestos present. It is important that materials are treated by a Certified Asbestos Abatement Contractor.

Appendix A – Certifications

United States Department of Commerce
 National Institute of Standards and Technology



Certificate of Accreditation to ISO/IEC 17025:2005

NVLAP LAB CODE: 200993-0

Asbestos Northwest, LLC
 Federal Way, WA


*is accredited by the National Voluntary Laboratory Accreditation Program for specific services,
 listed on the Scope of Accreditation, for:*


Asbestos Fiber Analysis

*This laboratory is accredited in accordance with the recognized International Standard ISO/IEC 17025:2005.
 This accreditation demonstrates technical competence for a defined scope and the operation of a laboratory quality
 management system (refer to joint ISO-ILAC-IAF Communiqué dated January 2009).*

2020-04-01 through 2021-03-31

Effective Dates





For the National Voluntary Laboratory Accreditation Program



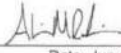
30620 Pacific Hwy S Suite 103 Federal Way, WA 98003
Tel: 253 941 4343 Fax: 253 941 4175

21905 64th Ave W, #100
Mountlake Terrace, WA 98043
(206) 285-3373



This certifies that
Sean T. Butler
has satisfactorily completed
4 hours of online refresher training as an
AHERA Building Inspector

to comply with the training requirements of
TSCA Title II, 40 CFR 763 (AHERA)

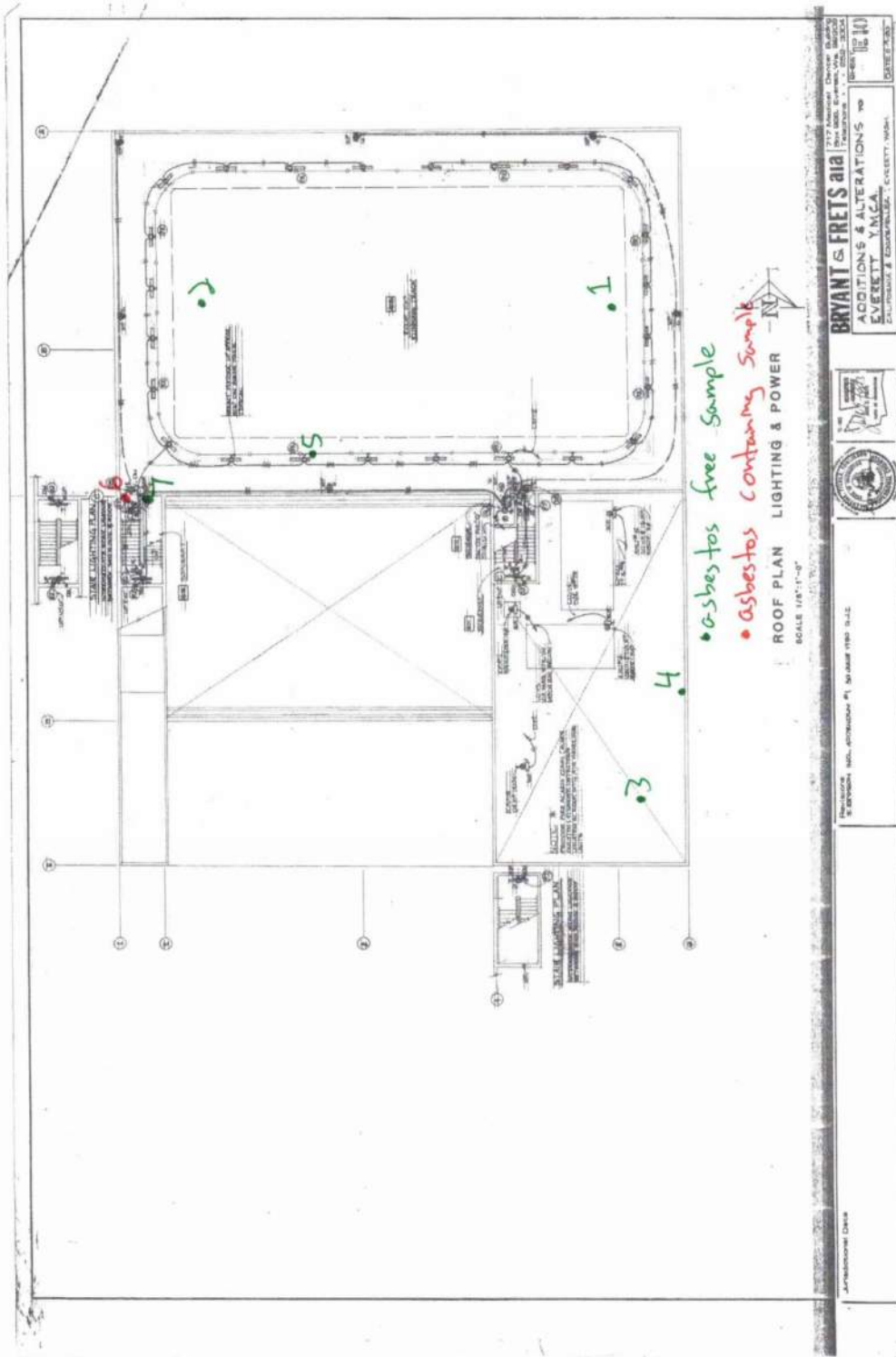


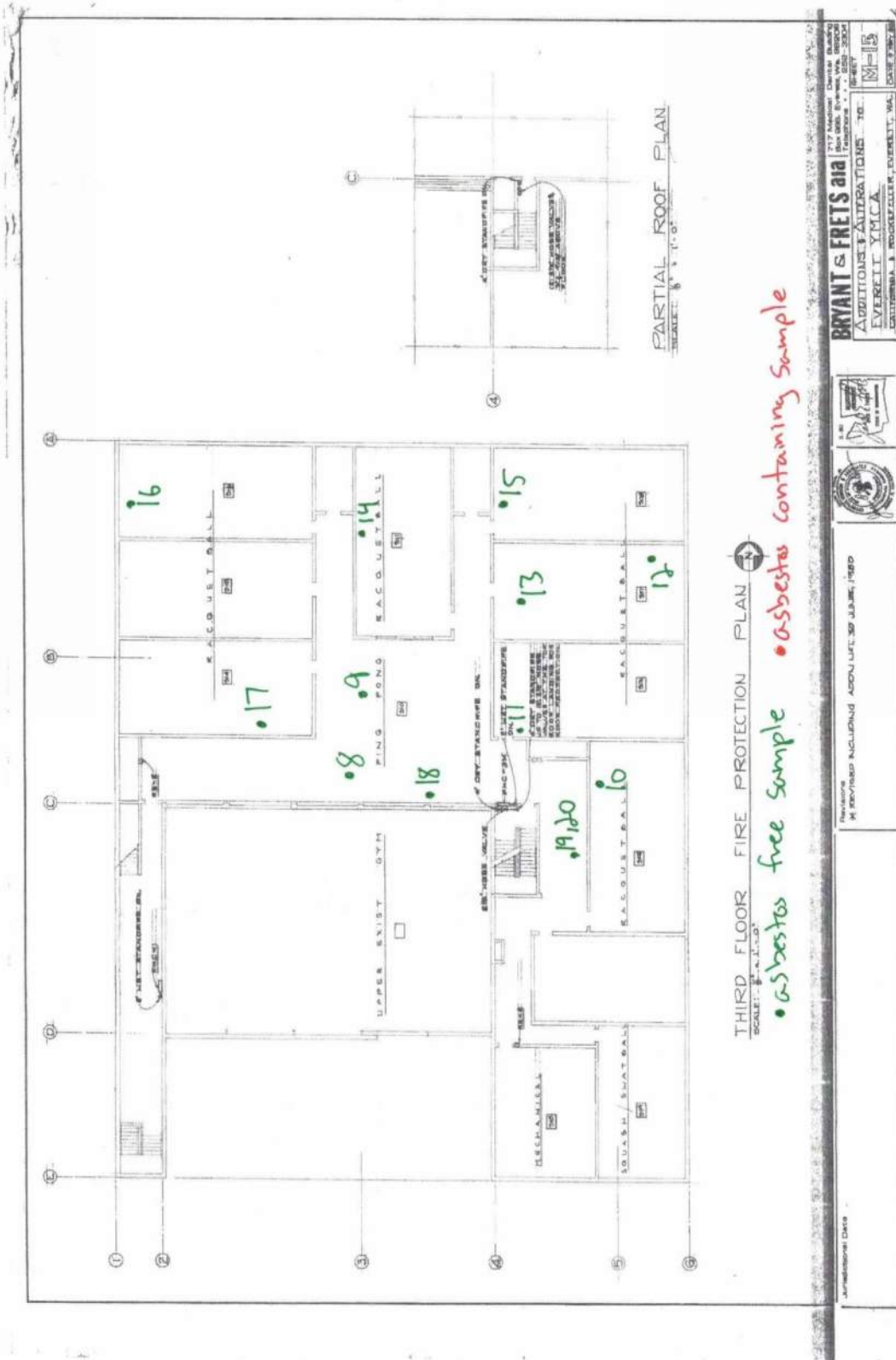
Instructor
Cert. Num: 178317

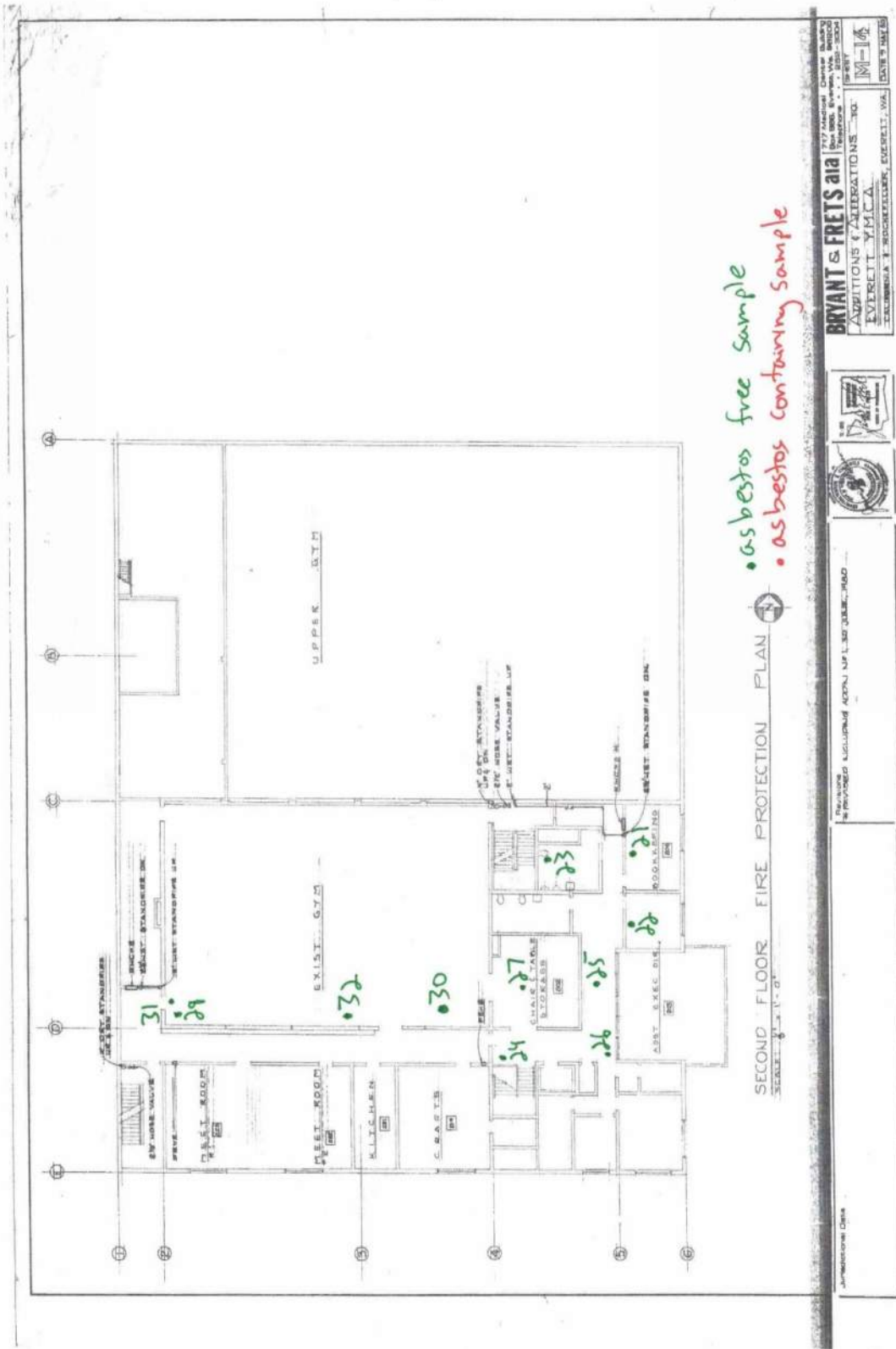
Date: Jun 17, 2020

EPA Provider # 1085
Expires in 1 year.

Appendix B – Building Layout





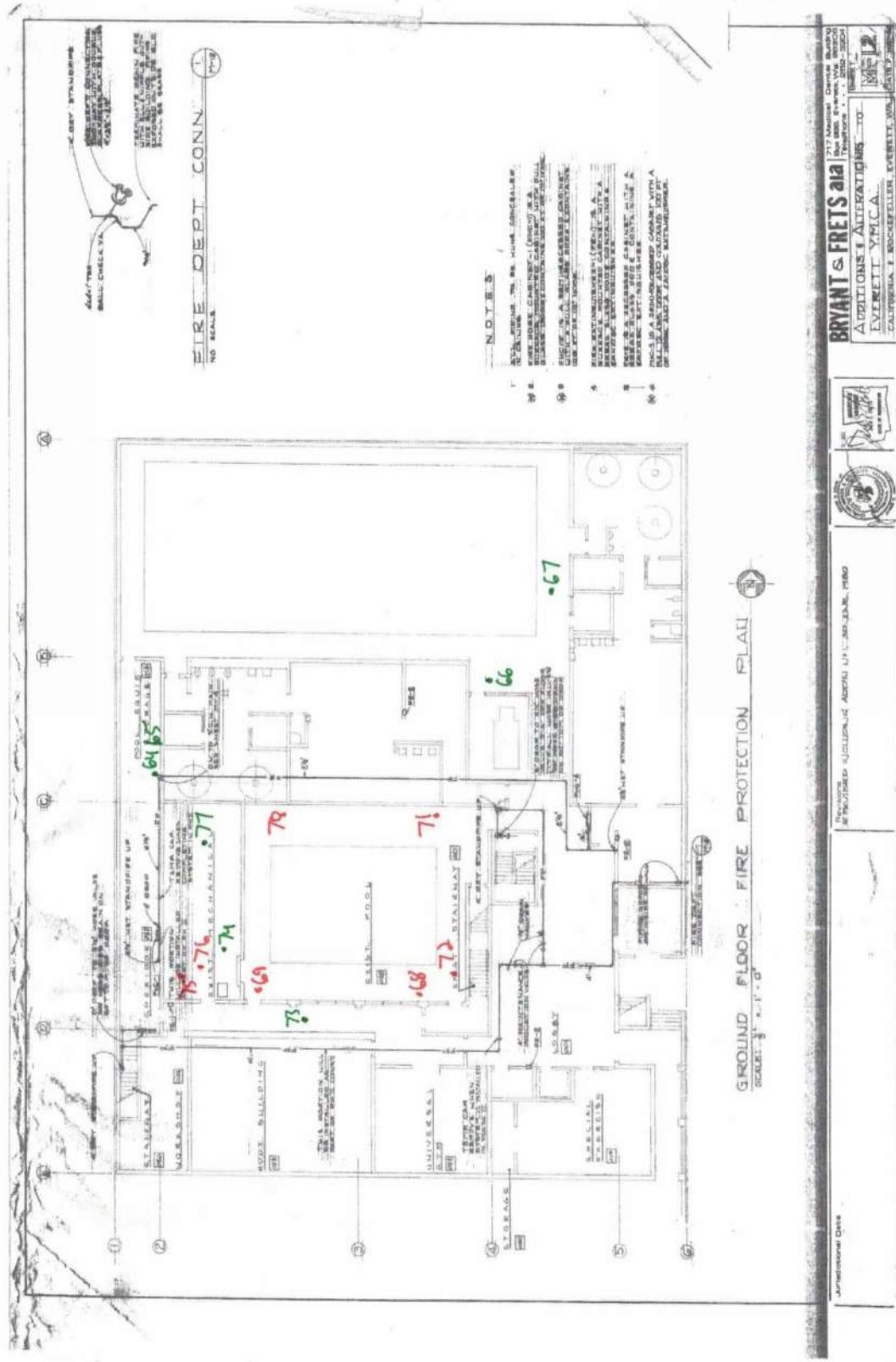


• asbestos free sample
 • asbestos containing sample

BRYANT & FRETTS aia
 ADDITIONS & ALTERATIONS
 EVERETT, WASH.
 EVERETT, WASH.
 EVERETT, WASH.



PROVIDED ILLUSTRATION APPROX. UP TO 30 JULY 2004
 JAMESON CORP.



ADD/778
 BALL CHECK VALVE
 CORRECT

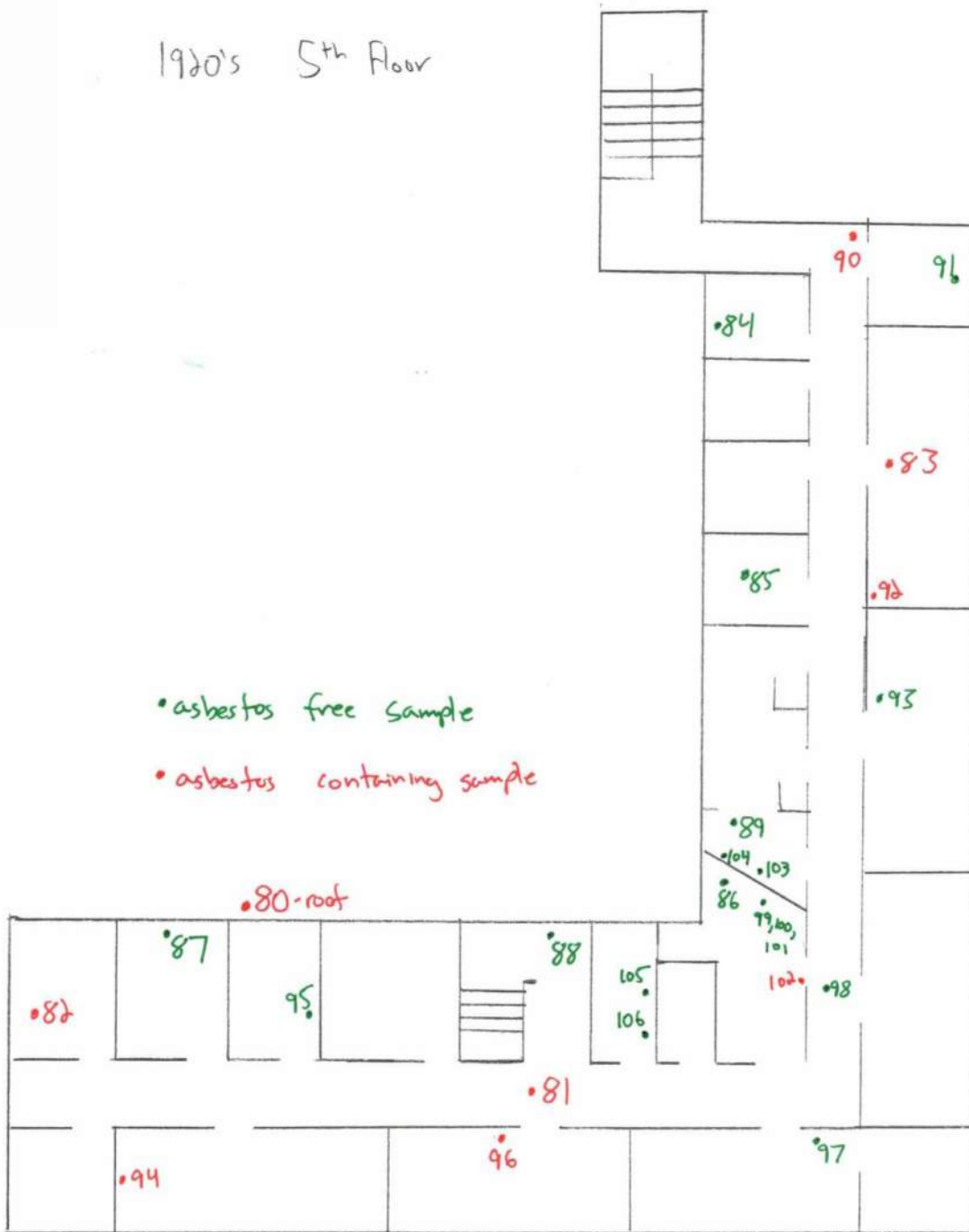
FIRE DEPT. CONN.
 NO BALL

- NOTES**
1. SEE DRAWING FOR BALL VALVE CONNECTIONS.
 2. BALL VALVE CONNECTIONS TO BE MADE AT THE LOCATION SHOWN ON THIS DRAWING.
 3. BALL VALVE CONNECTIONS TO BE MADE AT THE LOCATION SHOWN ON THIS DRAWING.
 4. BALL VALVE CONNECTIONS TO BE MADE AT THE LOCATION SHOWN ON THIS DRAWING.
 5. BALL VALVE CONNECTIONS TO BE MADE AT THE LOCATION SHOWN ON THIS DRAWING.
 6. BALL VALVE CONNECTIONS TO BE MADE AT THE LOCATION SHOWN ON THIS DRAWING.
 7. BALL VALVE CONNECTIONS TO BE MADE AT THE LOCATION SHOWN ON THIS DRAWING.
 8. BALL VALVE CONNECTIONS TO BE MADE AT THE LOCATION SHOWN ON THIS DRAWING.
 9. BALL VALVE CONNECTIONS TO BE MADE AT THE LOCATION SHOWN ON THIS DRAWING.
 10. BALL VALVE CONNECTIONS TO BE MADE AT THE LOCATION SHOWN ON THIS DRAWING.

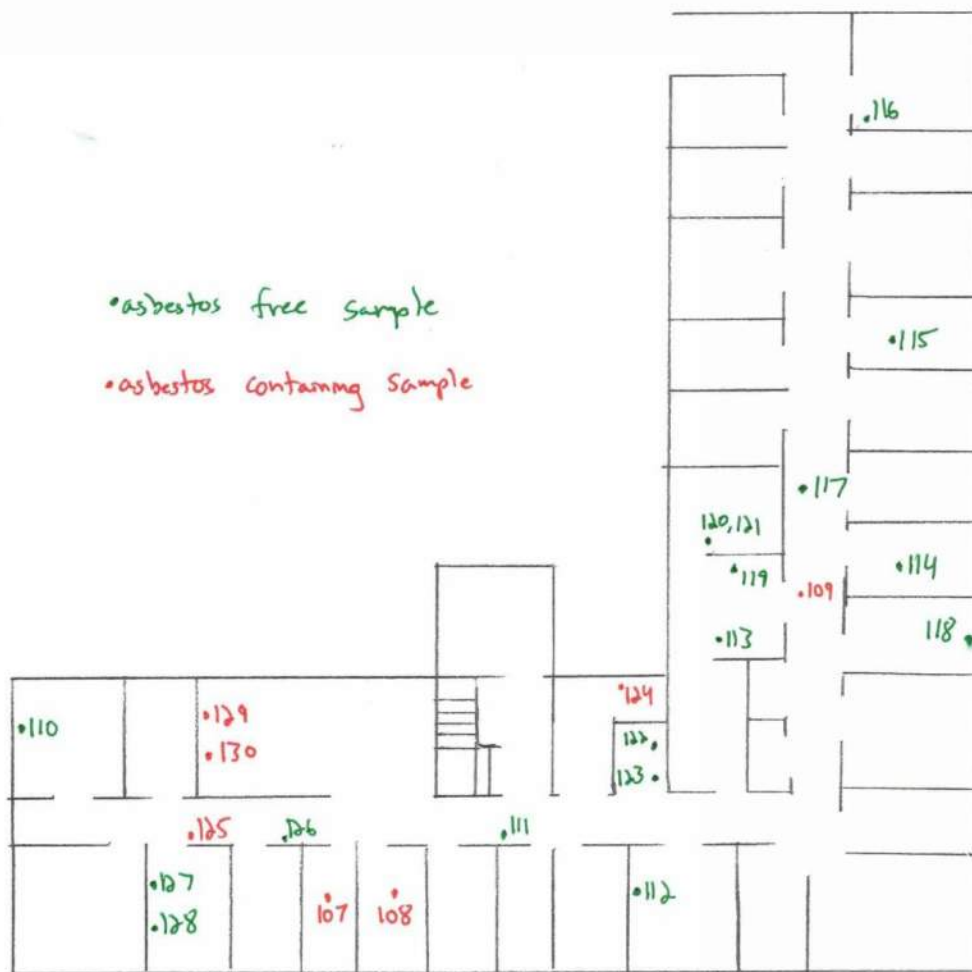
BRYANT & FRETTS
 ADDITIONS & ALTERATIONS
 EVERETT, WASH.
 CALIFORNIA, I. ROCKEFELLER, EVERETT, WASH.

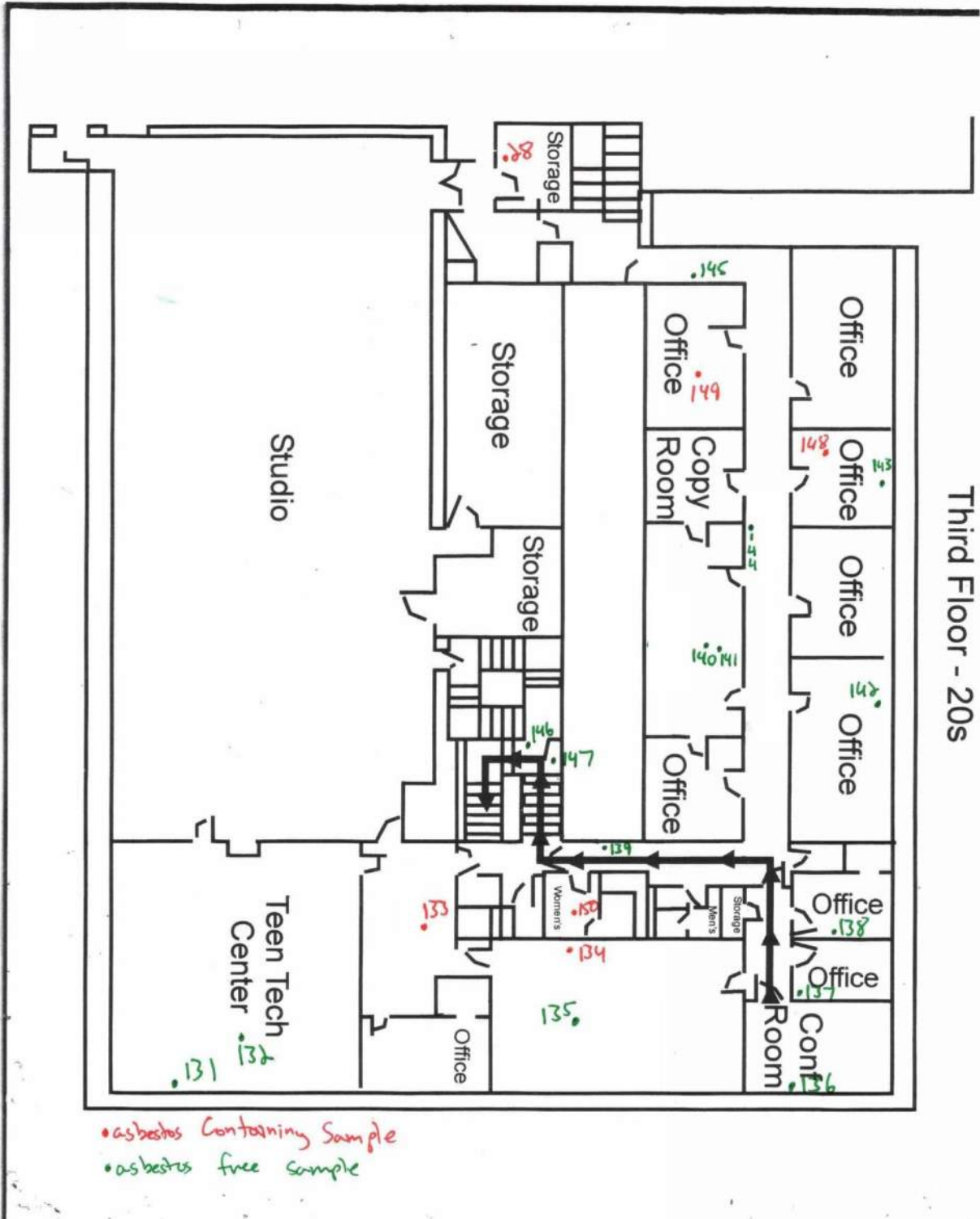
asbestos free sample
 asbestos containing sample

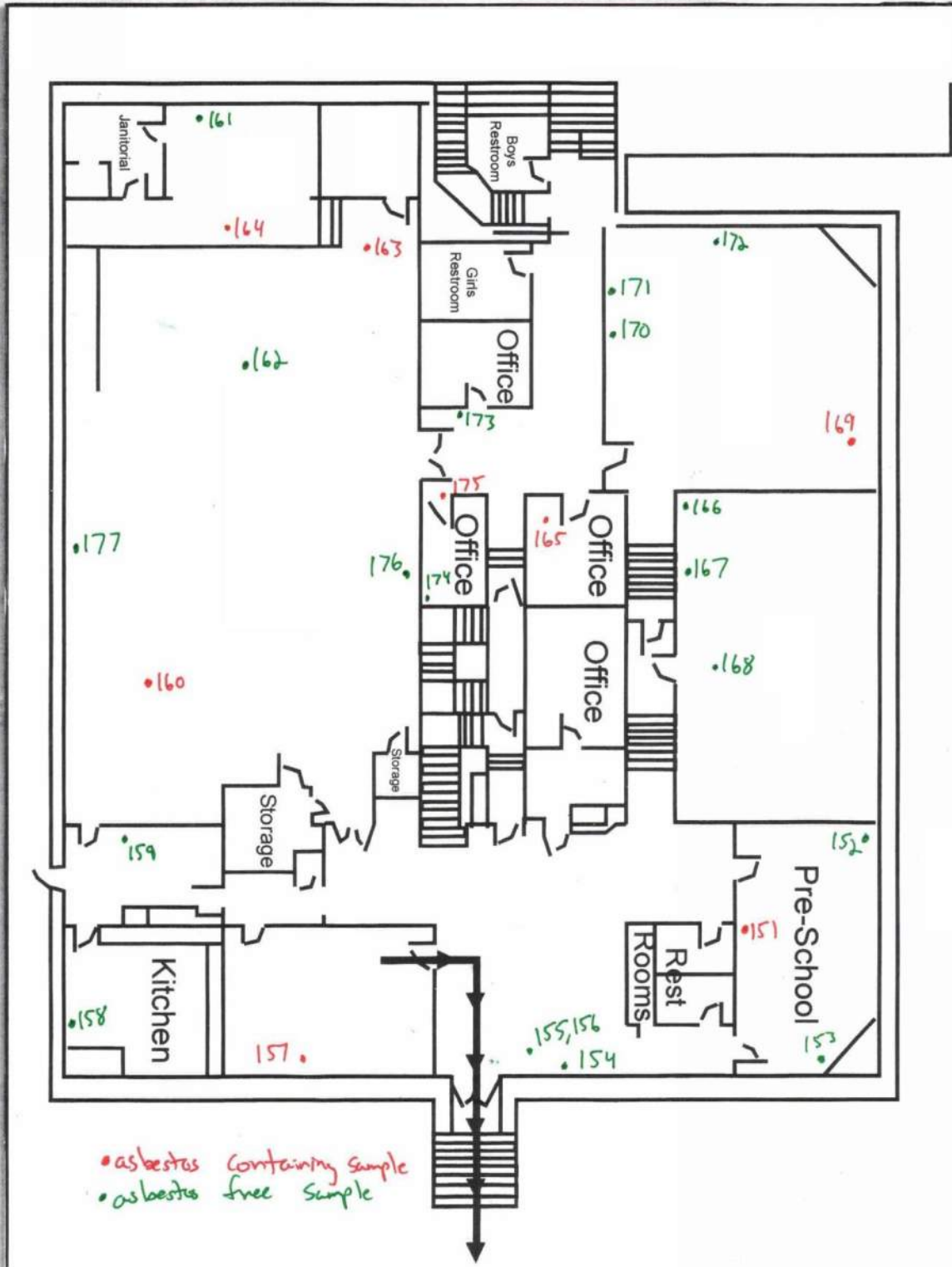
1920's 5th Floor

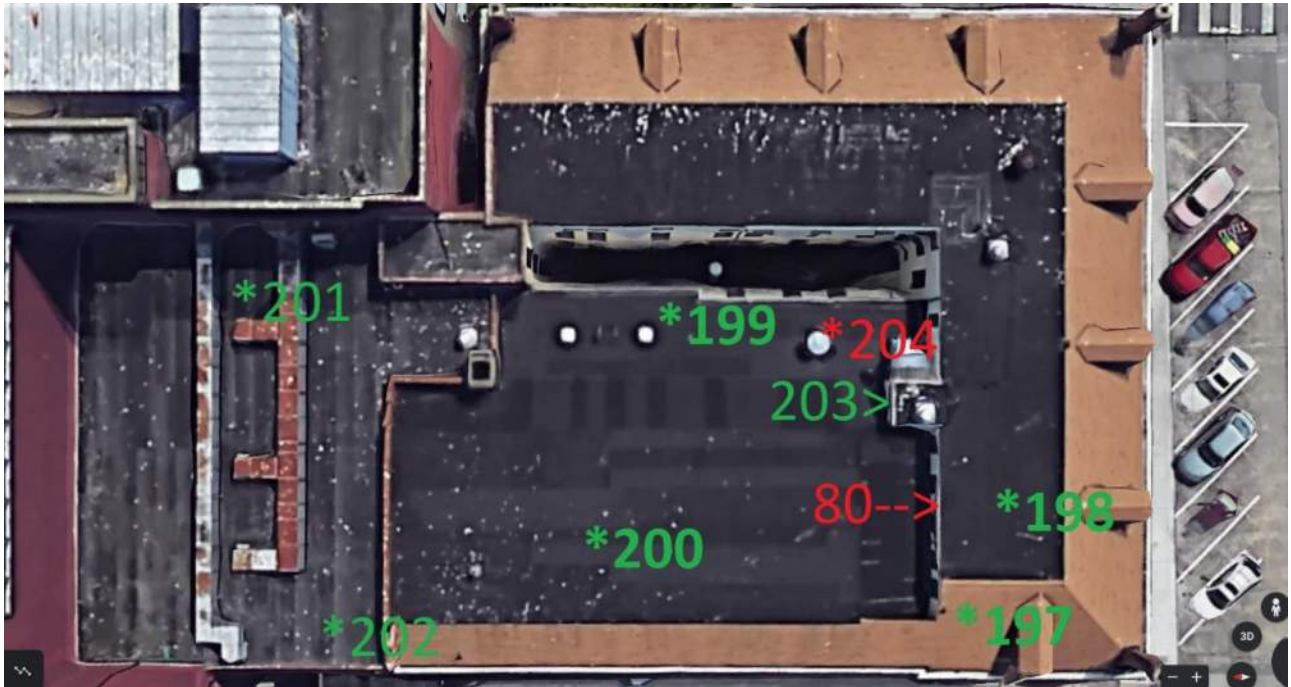


1920's 4th Floor









Roof



Sample 6 Location



Sample 80 Location



1920's Boiler Room

Appendix C – Laboratory Report



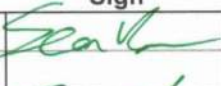
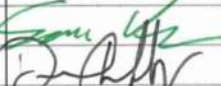

30620 Pacific Hwy S. #103, Federal Way, WA 98003
 (253) 941-4343 NVLAP Lab Code: 200993-0

Asbestos NW Batch# 202012857
1 of 7

Bulk Samples Chain of Custody (EPA 600/R-93/116)

Name/Company: Ascendent LLC	Date: 7/21/2020
Address: 219 12th St SE Puyallup, WA 98372	Phone: 253.939.4375
	E-mail: hestes@ascdemo.comSBova@ascdemo.
Project Manager: Sean Bova	Project # YMCA
Project Location: 2765 Rockefeller Ave Everett WA 98201	Number of Samples: 204
	Turn around time: 72

#	Sample ID	Description	Location/Comments
1	1	Grey Non-Slip Coating	Rooftop Deck NE
2	2	Grey Non-Slip Coating	Rooftop Deck NW
3	3	Layered Asphaltic Roofing	NE Roof by HVAC
4	4	Gray/Black Asphaltic Sealant	NE Roof Rampart Flashing
5	5	Gray Flexible Material	Rooftop Deck Pillar Trim
6	6	Grey Vinyl Tile and Black Mastic	Rooftop SW Stair Landing Floor
7	7	Texture	Rooftop SW Stair Landing Ceiling
8	8	Fibrous Ceiling Tile	Ping Pong Area Ceiling
9	9	Tan Vinyl Tile and Black Mastic	Ping Pong Area Floor
10	10	Plaster on Drywall	SE Court Wall
11	11	Plaster	East South Court Wall
12	12	Tan Mastic	East Instruction Area Mirror
13	13	Black Mastic	East Instruction Area Seating
14	14	Plaster	Middle Court Wall
15	15	Red Floor Coating	NE Court Floor
16	16	Plaster	Yoga Court Wall
17	17	Plaster	SW Court Wall
18	18	Cove Base Mastic	Ping Pong Area Wall
19	19	Yellow Insulation and White Foil Wrap	Ping Pong Area Ceiling Pipe
20	20	Yellow Insulation and White Foil Wrap	Ping Pong Area Ceiling Pipe
21	21	Plaster on Drywall	NW Office Wall
22	22	Plaster on Drywall	NW Meeting Room Wall
23	23	Mastic on Ceramic Tile	Mens Bathroom Wall
24	24	Plaster	Tech Area Wall
25	25	Plaster	Hallway Wall
26	26	Fibrous Ceiling Tile	Hallway Ceiling
27	27	Cove Base Mastic	60's Gym Entrance Lobby
28	28	Green and White Vinyl Tiles With Black Mastic	60's Gym Small Office Wall
29	29	Fibrous Ceiling Tile and Glue Dot	60's Gym Ceiling
30	30	Brown Fibrous Board with Black Coating	60's Gym under Floor

	Print	Sign	Company	Date	Time
Sampled by:	Sean Butler		Asbestos NW	7/16/2020	
Relinquished by:					
Delivered by:	Sean Butler			7/21/2020	8:00AM
Accepted by:	Dan Lafley			7/21/2020	8:00AM
Analyzed by:					



30620 Pacific Hwy S. #103, Federal Way, WA 98003
(253) 941-4343 NVLAP Lab Code: 200993-0



Asbestos NW Batch# 202012857

2 of 7

Bulk Samples Chain of Custody (EPA 600/R-93/116)

Name/Company: Ascendent LLC	Date: 7/21/2020
Address: 219 12th St SE Puyallup, WA 98372	Phone: 253.939.4375
	E-mail: hestes@ascdemo.comSBova@ascdemo.
Project Manager: Sean Bova	Project # YMCA
Project Location: 2765 Rockefeller Ave Everett WA 98201	Number of Samples: 204
	Turn around time: 72

#	Sample ID	Description	Location/Comments
31	31	Yellow Insulation and White Foil Wrap	60's Gym Ceiling Duct
32	32	Brown Glue Dot	60's Gym Cove Base Mastic
33	33	Joint Compound	Lobby Office Wall
34	34	Texture	Lobby Office Wall
35	35	Cove Base Mastic	Lobby Office Wall
36	36	Texture	Middle East Office Wall
37	37	Joint Compound	North East Office Wall
38	38	Texture	Break Room Wall
39	39	Joint Compound	Store Room Wall
40	40	Green Vinyl Tile and Black Mastic	Store Room Floor
41	41	Cove Base and Mastic	Hall by Locker Room Entrance
42	42	Plaster	Hall by Locker Room Entrance
43	43	Cove Base Mastic	Hall by East Stairs
44	44	Brown Vinyl Tile and Black Mastic	Hall by Locker Room Entrance
45	45	Mortar on Ceramic Tile	Mens Locker Room Wall
46	46	Fibrous Ceiling Tile	Break Room Ceiling
47	47	Cove Base and Mastic	80's Gym Wall
48	48	White Fire Proofing	80's Gym SW Ceiling
49	49	White Fire Proofing	80's Gym West Ceiling
50	50	White Fire Proofing	80's Gym NW Corner Ceiling
51	51	White Fire Proofing	80's Gym North Ceiling
52	52	White Fire Proofing	80's Gym NE Corner Ceiling
53	53	White Fire Proofing	80's Gym East Ceiling
54	54	White Fire Proofing	80's Gym SE Corner Ceiling
55	55	Black Stair Tread and Mastic	NW Corner Stairs
56	56	Gray Vinyl Tile and Black Mastic	NW Maintenance Office Floor
57	57	Silver Paint	West Wall Ducting in Mech Room
58	58	Yellow Insulation and White Foil Wrap	Center Vertical Pipe in Mech Room
59	59	Yellow Insulation and Plastic Casing	West Wall Small Elbow in Mech Room
60	60	Yellow Insulation and White Foil Wrap	South Large Boiler in Mech Room

	Print	Sign	Company	Date	Time
Sampled by:	Sean Butler		Asbestos NW	7/16/2020	
Relinquished by:					
Delivered by:	Sean Butler			7/21/2020	8:00AM
Accepted by:	Dan Lafley			7/21/2020	8:00AM
Analyzed by:					



30620 Pacific Hwy S. #103, Federal Way, WA 98003
 (253) 941-4343 NVLAP Lab Code: 200993-0




Asbestos NW Batch# 202012857

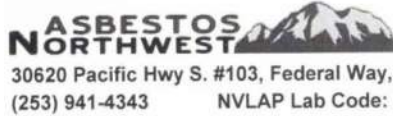
3 of 7

Bulk Samples Chain of Custody (EPA 600/R-93/116)

Name/Company: Ascendent LLC	Date: 7/21/2020
Address: 219 12th St SE Puyallup, WA 98372	Phone: 253.939.4375
	E-mail: hestes@ascdemo.com SBOva@ascdemo.
Project Manager: Sean Bova	Project # YMCA
Project Location: 2765 Rockefeller Ave Everett WA 98201	Number of Samples: 204
	Turn around time: 72

#	Sample ID	Description	Location/Comments
61	61	Yellow Insulation and White Foil Wrap	Overhead Pipe by Mech Room S Door
62	62	Black Rubbery Material	Mezzanine Duct Bellows
63	63	Yellow Insulation and White Foil Wrap	Mezzanine South Elbow
64	64	Yellow Insulation and White Foil Wrap	Pool Mech Room South Pipe
65	65	White Brittle Material <i>powder</i>	Pool Mech Room South Elbow
66	66	Drywall Ceiling Tile <i>P</i>	Pool Ceiling over Spa
67	67	Yellow Foam Insulation and White Cover	Pool Ceiling Noise Baffles
68	68	White Fire Proofing	Small Pool Ceiling SE
69	69	White Fire Proofing	Small Pool Ceiling SW
70	70	White Fire Proofing	Small Pool Ceiling NW
71	71	White Fire Proofing	Small Pool Ceiling NE
72	72	White Fire Proofing	Small Pool Ceiling over Entrance
73	73	Fibrous Ceiling Tile	Small Pool Hallway Ceiling
74	74	White Woven Material	Small Pool Mech Room Duct Bellows
75	75	White Brittle Material	Small Pool Mech Room Boiler
76	76	White Brittle Material	Small Pool Mech Room South Elbow
77	77	Yellow Insulation and White Foil Wrap	Small Pool Mech Room N Vertical Pipe
78	78	Vermiculite	In Wall Outside Main Mech Room
79	79	Vermiculite	In North Wall of 80's Gym
80	80	White Woven Paper	Roof of 20's Building Under Flashing
81	81	Brown Vinyl Tile and Black Mastic	5th Floor Hall Floor
82	82	Green Vinyl Tile and Black Mastic	5th Floor SW Room Floor
83	83	Red Vinyl Tile and Black Mastic	5th Floor NE Room Floor
84	84	Plaster	5th Floor NW Room Wall
85	85	Plaster	5th Floor East Room Ceiling
86	86	Plaster	5th Floor Bath Ceiling
87	87	Plaster	5th Floor West Room Wall
88	88	Plaster	5th Floor Stairwell Wall
89	89	Black Asphaltic Vapor Barrier	5th Floor Below Kitchen Wood Floor
90	90	Joint Compound	5th Floor Hall Wall

	Print	Sign	Company	Date	Time
Sampled by:	Sean Butler		Asbestos NW	7/16/2020	
Relinquished by:					
Delivered by:	Sean Butler			7/21/2020	8:00AM
Accepted by:	Dan Lafley			7/21/2020	8:00AM
Analyzed by:					






Asbestos NW Batch# 202012857
4 of 7

30620 Pacific Hwy S. #103, Federal Way, WA 98003
(253) 941-4343 NVLAP Lab Code: 200993-0

Bulk Samples Chain of Custody (EPA 600/R-93/116)

Name/Company: Ascendent LLC	Date: 7/21/2020
Address: 219 12th St SE Puyallup, WA 98372	Phone: 253.939.4375
	E-mail: hestes@ascdemo.comSBova@ascdemo.
Project Manager: Sean Bova	Project # YMCA
Project Location: 2765 Rockefeller Ave Everett WA 98201	Number of Samples: 204
	Turn around time: 72

#	Sample ID	Description	Location/Comments
91	91	Texture	5th Floor NE Corner Room Wall
92	92	Joint Compound	5th Floor NE Big Room Wall
93	93	Texture	5th Floor East Room Wall
94	94	Joint Compound	5th Floor SW Room Wall
95	95	Texture	5th Floor South Room Wall
96	96	Joint Compound	5th Floor South Mid Room Wall
97	97	Texture	5th Floor SE Room Wall
98	98	Fibrous Ceiling Tile	5th Floor Hall Ceiling
99	99	Woven Red Wiring Insulation	5th Floor Bathroom Wall
100	100	Woven White Wiring Insulation	5th Floor Bathroom Wall
101	101	Woven Black Wiring Insulation	5th Floor Bathroom Wall
102	102	Black Tar Paper	5th Floor Bathroom Door Opening
103	103	Yellow Backsplash and Mastic	5th Floor Kitchen Wall
104	104	White Brittle Pipe Wrap	5th Floor Kitchen Wall
105	105	Yellow Fibrous Insulation	5th Floor Utility Room Pipe
106	106	White Brittle Pipe Wrap	5th Floor Utility Room Pipe Elbow
107	107	Green Vinyl Tile and Black Mastic	4th Floor SW Room
108	108	Red Vinyl Tile and Black Mastic	4th Floor South Mid Room
109	109	Brown Vinyl Tile and Black Mastic	4th Floor East Hall
110	110	Plaster	4th Floor West Room Wall
111	111	Plaster	4th Floor Hall Wall
112	112	Plaster	4th Floor SE Room Wall
113	113	Plaster	4th Floor Bath Ceiling
114	114	Plaster	4th Floor East Mid Room
115	115	Plaster	4th Floor East North Room
116	116	Plaster	4th Floor North Corner Room
117	117	Fibrous Ceiling Tile	4th Floor Hall Ceiling
118	118	Black Asphaltic Paint on Wood	4th Floor Window Opening
119	119	Woven Black Wiring Insulation	4th Floor Bathroom
120	120	White Brittle Pipe Wrap	4th Floor Bathroom Pipe Elbow

	Print	Sign	Company	Date	Time
Sampled by:	Sean Butler		Asbestos NW	7/16/2020	
Relinquished by:					
Delivered by:	Sean Butler			7/21/2020	8:00AM
Accepted by:	Dan Lafley			7/21/2020	8:00AM
Analyzed by:					



30620 Pacific Hwy S. #103, Federal Way, WA 98003
(253) 941-4343 NVLAP Lab Code: 200993-0

Asbestos NW Batch# 202012857

5 of 7

Bulk Samples Chain of Custody (EPA 600/R-93/116)

Name/Company: Ascendent LLC	Date: 7/21/2020
Address: 219 12th St SE Puyallup, WA 98372	Phone: 253.939.4375
	E-mail: hestes@ascdemo.comSBova@ascdemo.
Project Manager: Sean Bova	Project # YMCA
Project Location: 2765 Rockefeller Ave Everett WA 98201	Number of Samples: 204
	Turn around time: 72

#	Sample ID	Description	Location/Comments
121	121	Yellow Insulation	4th Floor Bathroom Wall Pipe
122	122	Yellow Insulation	4th Floor Utility Closet Pipe
123	123	White Brittle Pipe Wrap	4th Floor Utility Closet Pipe Elbow
124	124	Gray Corrugated Pipe Wrap	4th Floor Small Bathroom Wall Pipe
125	125	Joint Compound	4th Floor Hall Wall
126	126	Texture	4th Floor Hall Wall
127	127	Joint Compound	4th Floor West Room Wall
128	128	Texture	4th Floor West Room Wall
129	129	Joint Compound	4th Floor Common Room Wall
130	130	Texture	4th Floor Common Room Wall
131	131	Plaster	3rd Floor Tech Room Wall
132	132	Fibrous Ceiling Tile	3rd Floor Tech Room Ceiling
133	133	Green Vinyl Tile and Black Mastic	3rd Floor Tech Room Lobby
134	134	Plaster	3rd Floor Conference Room Wall
135	135	White Woven Pad	3rd floor conference Room Floor
136	136	Plaster	3rd Floor SE Corner Room Wall
137	137	Joint Compound	3rd Floor SE Area Office Wall
138	138	Texture	3rd Floor SE Area Office Wall
139	139	Cove Base Mastic	3rd Floor Hall Wall
140	140	Joint Compound	3rd Floor Office Wall
141	141	Texture	3rd Floor Office Wall
142	142	Plaster	3rd Floor East Mid Office Wall
143	143	Plaster	3rd Floor East North Office Wall
144	144	Plaster	3rd Floor N/S Hall Wall
145	145	Plaster	3rd Floor North Hall Wall
146	146	Layered Vinyl	3rd Floor Middle Stairwell Landing
147	147	Mastic on Flexible Coating	3rd Floor Middle Stairs Under Tread
148	148	Tan Vinyl Tile and Black Mastic	3rd Floor East North Office Floor
149	149	Dark Tan Vinyl Tile and Black Mastic	3rd Floor North Office Floor
150	150	Light Gray Vinyl Tile and Black Mastic	3rd Floor Bathroom Floor

	Print	Sign	Company	Date	Time
Sampled by:	Sean Butler		Asbestos NW	7/16/2020	
Relinquished by:					
Delivered by:	Sean Butler			7/21/2020	8:00AM
Accepted by:	Dan Lafley			7/21/2020	8:00AM
Analyzed by:					



30620 Pacific Hwy S. #103, Federal Way, WA 98003
(253) 941-4343 NVLAP Lab Code: 200993-0

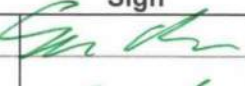


Asbestos NW Batch# 202012857

6 of 7

Bulk Samples Chain of Custody (EPA 600/R-93/116)

Name/Company: Ascendent LLC	Date: 7/21/2020
Address: 219 12th St SE Puyallup, WA 98372	Phone: 253.939.4375
	E-mail: hestes@ascdemo.comSBOva@ascdemo.
Project Manager: Sean Bova	Project # YMCA
Project Location: 2765 Rockefeller Ave Everett WA 98201	Number of Samples: 204
	Turn around time: 72

#	Sample ID	Description	Location/Comments
151	151	Layered Vinyl over Black Brittle Material	2nd Floor SE Room Floor
152	152	Joint Compound	2nd Floor SE Room Wall
153	153	Texture	2nd Floor SE Room Wall
154	154	Plaster	2nd Floor Lobby Wall
155	155	Fibrous Ceiling Tile	2nd Floor Lobby Suspended Ceiling
156	156	Fibrous Ceiling Tile with Black Mastic	2nd Floor Lobby Original Ceiling
157	157	Tan Vinyl Tile and Black Mastic over Black Brittle Material	2nd Floor Lobby Office Floor
158	158	Plaster	2nd Floor Kitchen Wall
159	159	Plaster	2nd Floor Kitchen Lobby Wall
160	160	Layered Vinyl over Black Brittle Material	2nd Floor Playroom Floor
161	161	Plaster	2nd Floor Stage Wall
162	162	Fibrous Ceiling Tile	2nd Floor Play Area Ceiling
163	163	Layered Vinyl over Black Brittle Material	2nd Floor Play Area NE Floor
164	164	Layered Vinyl	2nd Floor Stage
165	165	Layered Vinyl over Black Brittle Material	2nd Floor Office Outside Classroom
166	166	Joint Compound	2nd Floor Middle Classroom Wall
167	167	Texture	2nd Floor Middle Classroom Wall
168	168	Plaster	2nd Floor Middle Classroom Ceiling
169	169	Layered Vinyl	2nd Floor North Classroom Floor
170	170	Texture	2nd Floor North Classroom Wall
171	171	Joint Compound	2nd Floor North Classroom Wall
172	172	Plaster	2nd Floor North Classroom Wall
173	173	Texture	2nd Floor Center Office Wall
174	174	Joint Compound	2nd Floor Center Office Wall
175	175	Tan Vinyl Tile and Black Mastic	2nd Floor Small Center Office Floor
176	176	Cove Base Mastic	2nd Floor Play Area Wall
177	177	Fibrous Ceiling Tile with Black Mastic	2nd Floor Play Area Original Ceiling
178	178	Cove Base Mastic	20's Pool Area Wall
179	179	Corrugated Pipe Wrap	20's Pool Area South Hallway
180	180	Plaster	Basement SW Corner Office

	Print	Sign	Company	Date	Time
Sampled by:	Sean Butler		Asbestos NW	7/16/2020	
Relinquished by:					
Delivered by:	Sean Butler			7/21/2020	8:00AM
Accepted by:	Dan Lafley			7/21/2020	8:00AM
Analyzed by:					



Asbestos Northwest, LLC
30620 Pacific Hwy S, #103, Federal Way, WA 98003
Ph: (253) 941-4343 Fax: (253) 941-4175



Batch Number: 202012857

PLM Analysis by EPA Method 600/M4-82-020 and 600/R-93/116

This report must not be used by the client to claim product certification, approval, or endorsement by NVLAP, NIST, or any agency of the U.S. Government.

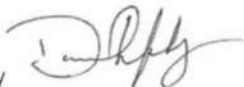
Attn: Sean Bova
Ascendent LLC
219 12th St SE Puyallup, WA 98372

Date Received: 7/21/2020
Date Analyzed: 7/24/2020
Samples Received: 204
Samples Analyzed: 204

Project: YMCA
Location: 2765 Rockefeller Ave Everett WA 98201

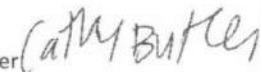
Client Sample ID	Lab Sample ID	Layer	Description	Matrix	% Non-Asbestos Fibers	% Asbestos Fibers and Type
1		1	Gray rubbery material	Rubber/binder	None Detected	None Detected
		2	Pale yellow mastic	Mastic/binder	1% Cellulose	None Detected
2		1	Gray rubbery material	Rubber/binder	None Detected	None Detected
		2	Pale yellow mastic	Mastic/binder	1% Cellulose	None Detected
3		1	Black asphaltic material	Asphalt/binder	5% Cellulose, Glass fibers, Polyethylene	None Detected
		2	Black asphaltic fibrous material	Asphalt/binder	80% Cellulose, Glass Fibers	None Detected
		3	Black asphaltic material	Asphalt/binder	5% Cellulose, Glass fibers, Polyethylene	None Detected
		4	Black asphaltic fibrous material	Asphalt/binder	80% Cellulose, Glass Fibers	None Detected
4		1	Gray/black soft/elastic material	Binder/filler	1% Cellulose, Glass fibers	None Detected
5		1	Gray soft rubbery material	Rubber/binder	2% Cellulose	None Detected
6		1	Gray sandy non slip material	Binder, Sand	1% Cellulose	None Detected
		2	Beige tile	Vinyl/binder, Mineral grains	2% Cellulose, Wollastonite	None Detected
		3	Black mastic	Mastic/binder	2% Cellulose	2% Chrysotile

Analyzed by: Dan Lafley



Report Page 1

Reviewed by: Cathy Butler





Asbestos Northwest, LLC
30620 Pacific Hwy S, #103, Federal Way, WA 98003
Ph: (253) 941-4343 Fax: (253) 941-4175



Batch Number: 202012857

PLM Analysis by EPA Method 600/M4-82-020 and 600/R-93/116

This report must not be used by the client to claim product certification, approval, or endorsement by NVLAP, NIST, or any agency of the U.S. Government.

Attn: Sean Bova
Ascendent LLC
219 12th St SE Puyallup, WA 98372

Date Received: 7/21/2020
Date Analyzed: 7/24/2020
Samples Received: 204
Samples Analyzed: 204

Project: YMCA
Location: 2765 Rockefeller Ave Everett WA 98201

Client Sample ID	Lab Sample ID	Layer	Description	Matrix	% Non-Asbestos Fibers	% Asbestos Fibers and Type
7		1	White powdery material with paint	Binder/filler, Paint	2% Cellulose	None Detected
		2	White chalky material with paper	Filler/binder, Gypsum	25% Cellulose, Glass fibers	None Detected
8		1	Gray fibrous material with paint	Filler, Perlite, Paint	90% Glass fibers, Cellulose	None Detected
9		1	Yellow mastic	Mastic/binder	1% Cellulose	None Detected
		2	Beige tile	Vinyl/binder, Mineral grains	2% Cellulose	None Detected
		3	Black mastic	Mastic/binder	3% Cellulose	None Detected
10		1	White woven fibrous material with paint	Filler, binder, Paint	70% Cellulose, Synthetic fibers	None Detected
		2	White chalky material with paint and paper	Filler/binder, Gypsum, Paint	25% Cellulose, Glass fibers	None Detected
11		1	White woven fibrous material with paint	Filler, binder, Paint	70% Cellulose, Synthetic fibers	None Detected
		2	White powdery/brittle material with paint	Filler/binder, Paint	3% Cellulose	None Detected
12		1	Tan mastic	Mastic/binder	None Detected	None Detected
13		1	Dark gray mastic	Mastic/binder	2% Cellulose, Glass fibers	None Detected
		2	Brown wood	Wood Aggregates	None Detected	None Detected

Analyzed by: Dan Lafley 

Report Page 2

Reviewed by: Cathy Butler 



Asbestos Northwest, LLC
 30620 Pacific Hwy S, #103, Federal Way, WA 98003
 Ph: (253) 941-4343 Fax: (253) 941-4175



Batch Number: 202012857

PLM Analysis by EPA Method 600/M4-82-020 and 600/R-93/116

This report must not be used by the client to claim product certification, approval, or endorsement by NVLAP, NIST, or any agency of the U.S. Government.

Attn: Sean Bova
 Ascendent LLC
 219 12th St SE Puyallup, WA 98372

Date Received: 7/21/2020
 Date Analyzed: 7/24/2020
 Samples Received: 204
 Samples Analyzed: 204

Project: YMCA
 Location: 2765 Rockefeller Ave Everett WA 98201

Client Sample ID	Lab Sample ID	Layer	Description	Matrix	% Non-Asbestos Fibers	% Asbestos Fibers and Type
14		1	White woven fibrous material with paint	Filler, binder, Paint	70% Cellulose, Synthetic fibers	None Detected
		2	White powdery/brittle material with paint	Filler/binder, Paint	3% Cellulose	None Detected
15		1	Red soft rubbery material	Rubber/binder	2% Cellulose	None Detected
16		1	White woven fibrous material with paint	Filler, binder, Paint	70% Cellulose, Synthetic fibers	None Detected
		2	Trace white powdery/brittle material with paint	Filler/binder, Paint	3% Cellulose	None Detected
17		1	White woven fibrous material with paint	Filler, binder, Paint	70% Cellulose, Synthetic fibers	None Detected
		2	Trace white powdery/brittle material with paint	Filler/binder, Paint	3% Cellulose	None Detected
18		1	Brown rubbery material	Rubber/binder	None Detected	None Detected
		2	Pale yellow mastic and paint	Mastic/binder, Paint	1% Cellulose	None Detected
		3	Brown mastic	Mastic/binder	2% Cellulose, Wollastonite	None Detected
19		1	Silver foil	Foil/binder	None Detected	None Detected
		2	Brown fibrous material	Filler, Binder	70% Cellulose	None Detected
		3	Yellow fibrous material	Filler	90% Glass fibers	None Detected

Analyzed by: Dan Lafley 

Report Page 3

Reviewed by: Cathy Butler 



Asbestos Northwest, LLC
 30620 Pacific Hwy S, #103, Federal Way, WA 98003
 Ph: (253) 941-4343 Fax: (253) 941-4175



Batch Number: 202012857

PLM Analysis by EPA Method 600/M4-82-020 and 600/R-93/116

This report must not be used by the client to claim product certification, approval, or endorsement by NVLAP, NIST, or any agency of the U.S. Government.

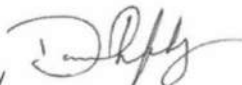
Attn: Sean Bova
 Ascendent LLC
 219 12th St SE Puyallup, WA 98372

Date Received: 7/21/2020
 Date Analyzed: 7/24/2020
 Samples Received: 204
 Samples Analyzed: 204

Project: YMCA
 Location: 2765 Rockefeller Ave Everett WA 98201

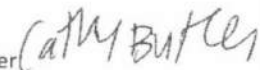
Client Sample ID	Lab Sample ID	Layer	Description	Matrix	% Non-Asbestos Fibers	% Asbestos Fibers and Type
20		1	Silver foil	Foil/binder	None Detected	None Detected
		2	Brown fibrous material	Filler, Binder	70% Cellulose	None Detected
		3	Yellow fibrous material	Filler	90% Glass fibers	None Detected
21		1	White hard sandy material	Binder/filler, Paint	1% Cellulose	None Detected
		2	White chalky material with paper	Filler/binder, Gypsum	25% Cellulose	None Detected
22		1	White hard sandy material	Binder/filler, Paint	1% Cellulose	None Detected
		2	White chalky material with paper	Filler/binder, Gypsum	25% Cellulose	None Detected
23		1	White fibrous material with paint	Filler, Paint	75% Cellulose, Glass Fibers	None Detected
		2	Yellow mastic	Mastic/binder	2% Cellulose	None Detected
24		1	White hard sandy material with woven fibrous material	Binder/filler, Paint	1% Cellulose	None Detected
		2	White chalky material with paper	Filler/binder, Gypsum	25% Cellulose	None Detected
25		1	White hard sandy material with woven fibrous material	Binder/filler, Paint	1% Cellulose	None Detected
		2	White chalky material with paper	Filler/binder, Gypsum	25% Cellulose	None Detected

Analyzed by: Dan Lafley



Report Page 4

Reviewed by: Cathy Butler





Asbestos Northwest, LLC
 30620 Pacific Hwy S, #103, Federal Way, WA 98003
 Ph: (253) 941-4343 Fax: (253) 941-4175



Batch Number: 202012857

PLM Analysis by EPA Method 600/M4-82-020 and 600/R-93/116

This report must not be used by the client to claim product certification, approval, or endorsement by NVLAP, NIST, or any agency of the U.S. Government.

Attn: Sean Bova
Ascendent LLC
219 12th St SE Puyallup, WA 98372

Date Received: 7/21/2020
Date Analyzed: 7/24/2020
Samples Received: 204
Samples Analyzed: 204

Project: YMCA
Location: 2765 Rockefeller Ave Everett WA 98201

Client Sample ID	Lab Sample ID	Layer	Description	Matrix	% Non-Asbestos Fibers	% Asbestos Fibers and Type
26		1	White powdery material with paint	Binder/filler, Paint	3% Cellulose	None Detected
		2	Gray fibrous material with paint	Filler, Perlite, Paint	80% Cellulose	None Detected
27		1	Black rubbery material	Rubber/binder	None Detected	None Detected
		2	White powdery material with paint	Binder/filler, Paint	2% Cellulose	None Detected
		3	White chalky material with paper	Filler/binder, Gypsum	25% Cellulose, Glass fibers	None Detected
28		1	Green tile	Vinyl/binder, Mineral grains	2% Cellulose, Wollastonite	4% Chrysotile
		2	Black mastic	Mastic/binder	2% Cellulose	2% Chrysotile
		3	Tan tile	Vinyl/binder, Mineral grains	2% Cellulose, Wollastonite	4% Chrysotile
		4	Black mastic	Mastic/binder	2% Cellulose	2% Chrysotile
29		1	Gray fibrous material with paint	Filler, Paint	90% Cellulose	None Detected
		2	Gray mastic	Mastic/binder	5% Cellulose	None Detected
30		1	Brown fibrous material	Filler	90% Cellulose	None Detected
		2	Black plastic	Plastic	None Detected	None Detected

Analyzed by: Dan Lafley



Report Page 5

Reviewed by: Cathy Butler





Asbestos Northwest, LLC
 30620 Pacific Hwy S, #103, Federal Way, WA 98003
 Ph: (253) 941-4343 Fax: (253) 941-4175



Batch Number: 202012857

PLM Analysis by EPA Method 600/M4-82-020 and 600/R-93/116

This report must not be used by the client to claim product certification, approval, or endorsement by NVLAP, NIST, or any agency of the U.S. Government.

Attn: Sean Bova
Ascendent LLC
219 12th St SE Puyallup, WA 98372

Date Received: 7/21/2020
Date Analyzed: 7/24/2020
Samples Received: 204
Samples Analyzed: 204

Project: YMCA
Location: 2765 Rockefeller Ave Everett WA 98201

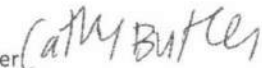
Client Sample ID	Lab Sample ID	Layer	Description	Matrix	% Non-Asbestos Fibers	% Asbestos Fibers and Type
31		1	Silver foil	Foil/binder	None Detected	None Detected
		2	Brown fibrous material	Filler, Binder	90% Cellulose	None Detected
		3	Yellow fibrous material	Filler	90% Glass fibers	None Detected
32		1	White powdery material	Filler/binder	75% Cellulose, Glass Fibers	None Detected
		2	Yellow mastic	Mastic/binder	2% Cellulose	None Detected
33		1	White powdery material with paint	Binder/filler, Paint	3% Cellulose	None Detected
		2	White chalky material with paper	Filler/binder, Gypsum	25% Cellulose	None Detected
34		1	White powdery material with paint	Binder/filler, Paint	3% Cellulose	None Detected
		2	White powdery material with paper	Filler/binder	10% Cellulose	None Detected
		3	White chalky material with paper	Filler/binder, Gypsum	25% Cellulose	None Detected
35		1	Blue rubbery material	Rubber/binder	None Detected	None Detected
		2	White mastic	Mastic/binder	3% Cellulose	None Detected
36		1	White hard sandy material	Binder/filler, Paint	1% Cellulose	None Detected
		2	White chalky material with paper	Filler/binder, Gypsum	25% Cellulose	None Detected

Analyzed by: Dan Lafley



Report Page 6

Reviewed by: Cathy Butler





Asbestos Northwest, LLC
30620 Pacific Hwy S, #103, Federal Way, WA 98003
Ph: (253) 941-4343 Fax: (253) 941-4175



Batch Number: 202012857

PLM Analysis by EPA Method 600/M4-82-020 and 600/R-93/116

This report must not be used by the client to claim product certification, approval, or endorsement by NVLAP, NIST, or any agency of the U.S. Government.

Attn: Sean Bova
Ascendent LLC
219 12th St SE Puyallup, WA 98372

Date Received: 7/21/2020
Date Analyzed: 7/24/2020
Samples Received: 204
Samples Analyzed: 204

Project: YMCA
Location: 2765 Rockefeller Ave Everett WA 98201

Client Sample ID	Lab Sample ID	Layer	Description	Matrix	% Non-Asbestos Fibers	% Asbestos Fibers and Type
37		1	White hard sandy material with woven fibrous material	Binder/filler, Paint	1% Cellulose	None Detected
		2	White chalky material with paper	Filler/binder, Gypsum	25% Cellulose	None Detected
38		1	White hard sandy material with woven fibrous material	Binder/filler, Paint	1% Cellulose	None Detected
		2	White chalky material with paper	Filler/binder, Gypsum	25% Cellulose	None Detected
39		1	White powdery material with paint and paper	Binder/filler, Paint	5% Cellulose	None Detected
		2	White chalky material with paper	Filler/binder, Gypsum	25% Cellulose	None Detected
40		1	Green tile	Vinyl/binder, Mineral grains	2% Cellulose, Wollastonite	4% Chrysotile
		2	Black mastic	Mastic/binder	2% Cellulose	2% Chrysotile
41		1	Brown rubbery material	Rubber/binder	None Detected	None Detected
		2	Brown mastic	Mastic/binder	2% Cellulose, Wollastonite	None Detected
42		1	White powdery/brittle material with paint	Filler/binder, Paint	3% Cellulose	None Detected
43		1	Blue rubbery material	Rubber/binder	None Detected	None Detected
		2	Brown mastic	Mastic/binder	2% Cellulose, Wollastonite	None Detected
		3	White powdery/brittle material with paint	Filler/binder, Paint	3% Cellulose	None Detected

Analyzed by: Dan Lafley



Report Page 7

Reviewed by: Cathy Butler





Asbestos Northwest, LLC
 30620 Pacific Hwy S, #103, Federal Way, WA 98003
 Ph: (253) 941-4343 Fax: (253) 941-4175



Batch Number: 202012857

PLM Analysis by EPA Method 600/M4-82-020 and 600/R-93/116

This report must not be used by the client to claim product certification, approval, or endorsement by NVLAP, NIST, or any agency of the U.S. Government.

Attn: Sean Bova
 Ascendent LLC
 219 12th St SE Puyallup, WA 98372

Date Received: 7/21/2020
 Date Analyzed: 7/24/2020
 Samples Received: 204
 Samples Analyzed: 204

Project: YMCA
 Location: 2765 Rockefeller Ave Everett WA 98201

Client Sample ID	Lab Sample ID	Layer	Description	Matrix	% Non-Asbestos Fibers	% Asbestos Fibers and Type
44		1	Brown tile	Vinyl/binder, Mineral grains	2% Cellulose, Wollastonite	2% Chrysotile
		2	Black mastic	Mastic/binder	2% Cellulose	3% Chrysotile
45		1	Gray brittle material	Binder/filler	1% Cellulose, Talc	None Detected
46		1	Gray fibrous material with paint	Filler, Perlite, Paint	90% Glass fibers, Cellulose	None Detected
47		1	Brown rubbery material	Rubber/binder	None Detected	None Detected
		2	Brown mastic	Mastic/binder	2% Cellulose, Wollastonite	None Detected
		3	Tan mastic	Mastic/binder	None Detected	None Detected
48		1	White fibrous material with paint	Filler, Binder	80% Cellulose	None Detected
49		1	White fibrous material with paint	Filler, Binder	80% Cellulose	None Detected
50		1	White fibrous material with paint	Filler, Binder	80% Cellulose	None Detected
51		1	White fibrous material with paint	Filler, Binder	80% Cellulose	None Detected
52		1	White fibrous material with paint	Filler, Binder	80% Cellulose	None Detected
53		1	White fibrous material with paint	Filler, Binder	80% Cellulose	None Detected
54		1	White fibrous material with paint	Filler, Binder	80% Cellulose	None Detected

Analyzed by: Dan Lafley 

Reviewed by: Cathy Butler 



Asbestos Northwest, LLC
 30620 Pacific Hwy S, #103, Federal Way, WA 98003
 Ph: (253) 941-4343 Fax: (253) 941-4175



Batch Number: 202012857

PLM Analysis by EPA Method 600/M4-82-020 and 600/R-93/116

This report must not be used by the client to claim product certification, approval, or endorsement by NVLAP, NIST, or any agency of the U.S. Government.

Attn: Sean Bova
 Ascendent LLC
 219 12th St SE Puyallup, WA 98372

Date Received: 7/21/2020
 Date Analyzed: 7/24/2020
 Samples Received: 204
 Samples Analyzed: 204

Project: YMCA
 Location: 2765 Rockefeller Ave Everett WA 98201

Client Sample ID	Lab Sample ID	Layer	Description	Matrix	% Non-Asbestos Fibers	% Asbestos Fibers and Type
55		1	Black rubbery material	Rubber/binder	2% Glass fibers	None Detected
		2	Brown mastic	Mastic/binder	2% Cellulose, Wollastonite	None Detected
56		1	Gray tile	Vinyl/binder, Mineral grains	2% Cellulose	None Detected
		2	Black mastic	Mastic/binder	2% Cellulose	3% Chrysotile
57		1	Silver foil	Foil/binder	None Detected	None Detected
		2	Brown fibrous material	Filler, Binder	70% Cellulose	None Detected
		3	Yellow fibrous material	Filler	90% Glass fibers	None Detected
58		1	Gray soft/elastic material	Binder/filler	None Detected	None Detected
59		1	Painted plastic	Plastic/binder	None Detected	None Detected
		2	Yellow fibrous material	Filler	90% Glass fibers	None Detected
60		1	White woven fibrous material	Filler, binder	70% Cellulose, Synthetic fibers	None Detected
		2	Yellow fibrous material	Filler	90% Glass fibers	None Detected

Analyzed by: Dan Lafley



Report Page 9

Reviewed by: Cathy Butler





Asbestos Northwest, LLC
 30620 Pacific Hwy S, #103, Federal Way, WA 98003
 Ph: (253) 941-4343 Fax: (253) 941-4175



Batch Number: 202012857

PLM Analysis by EPA Method 600/M4-82-020 and 600/R-93/116

This report must not be used by the client to claim product certification, approval, or endorsement by NVLAP, NIST, or any agency of the U.S. Government.

Attn: Sean Bova
 Ascendent LLC
 219 12th St SE Puyallup, WA 98372

Date Received: 7/21/2020
 Date Analyzed: 7/24/2020
 Samples Received: 204
 Samples Analyzed: 204

Project: YMCA
 Location: 2765 Rockefeller Ave Everett WA 98201

Client Sample ID	Lab Sample ID	Layer	Description	Matrix	% Non-Asbestos Fibers	% Asbestos Fibers and Type
61		1	Silver foil	Foil/binder	None Detected	None Detected
		2	White fibrous material	Filler, Binder	90% Cellulose	None Detected
		3	Yellow fibrous material	Filler	90% Glass fibers	None Detected
62		1	Black rubbery material	Rubber/binder	2% Glass fibers	None Detected
63		1	Silver foil	Foil/binder	None Detected	None Detected
		2	White fibrous material	Filler, Binder	90% Cellulose	None Detected
		3	Yellow fibrous material	Filler	90% Glass fibers	None Detected
64		1	White woven material	Filler, Binder	90% Synthetic fibers	None Detected
		2	Yellow fibrous material	Filler	90% Glass fibers	None Detected
65		1	White powdery material with fibrous material	Filler/binder	20% Cellulose, Glass fibers	None Detected
66		1	White chalky material with paint and paper	Filler/binder, Gypsum, Paint	20% Cellulose, Glass fibers	None Detected
67		1	White vinyl material	Filler, Binder	None Detected	None Detected
		2	Yellow fibrous material	Filler	90% Glass fibers	None Detected
68		1	White powdery/brittle material with paint	Filler/binder, Paint	2% Cellulose	8% Chrysotile

Analyzed by: Dan Lafley 

Report Page 10

Reviewed by: Cathy Butler 



Asbestos Northwest, LLC
 30620 Pacific Hwy S, #103, Federal Way, WA 98003
 Ph: (253) 941-4343 Fax: (253) 941-4175



Batch Number: 202012857

PLM Analysis by EPA Method 600/M4-82-020 and 600/R-93/116

This report must not be used by the client to claim product certification, approval, or endorsement by NVLAP, NIST, or any agency of the U.S. Government.

Attn: Sean Bova
 Ascendent LLC
 219 12th St SE Puyallup, WA 98372

Date Received: 7/21/2020
 Date Analyzed: 7/24/2020
 Samples Received: 204
 Samples Analyzed: 204

Project: YMCA
 Location: 2765 Rockefeller Ave Everett WA 98201

Client Sample ID	Lab Sample ID	Layer	Description	Matrix	% Non-Asbestos Fibers	% Asbestos Fibers and Type
69		1	White powdery/brittle material with paint	Filler/binder, Paint	2% Cellulose	8% Chrysotile
70		1	White powdery/brittle material with paint	Filler/binder, Paint	2% Cellulose	8% Chrysotile
71		1	White powdery/brittle material with paint	Filler/binder, Paint	2% Cellulose	8% Chrysotile
72		1	White powdery/brittle material with paint	Filler/binder, Paint	2% Cellulose	8% Chrysotile
73		1	Gray fibrous material with paint	Filler, Perlite, Paint	90% Glass fibers, Cellulose	None Detected
74		1	White woven fibrous material	Binder	90% Synthetic fibers	None Detected
75		1	White powdery/brittle material with paint	Filler/binder, Paint	2% Cellulose	8% Chrysotile
76		1	Gray powdery material with fibrous material	Filler/binder	3% Cellulose, Glass fibers	55% Chrysotile
77		1	Silver foil	Foil/binder	None Detected	None Detected
		2	White fibrous material	Filler, Binder	90% Cellulose	None Detected
		3	Yellow fibrous material	Filler	90% Glass fibers	None Detected
78		1	Brown soft/lumpy material	Vermiculite	None Detected	<1% Tremolite, Actinolite
79		1	Brown soft/lumpy material	Vermiculite	None Detected	<1% Tremolite, Actinolite

Analyzed by: Dan Lafley 

Report Page 11

Reviewed by: Cathy Butler 



Asbestos Northwest, LLC
30620 Pacific Hwy S, #103, Federal Way, WA 98003
Ph: (253) 941-4343 Fax: (253) 941-4175



Batch Number: 202012857

PLM Analysis by EPA Method 600/M4-82-020 and 600/R-93/116

This report must not be used by the client to claim product certification, approval, or endorsement by NVLAP, NIST, or any agency of the U.S. Government.

Attn: Sean Bova
Ascendent LLC
219 12th St SE Puyallup, WA 98372

Date Received: 7/21/2020
Date Analyzed: 7/24/2020
Samples Received: 204
Samples Analyzed: 204

Project: YMCA
Location: 2765 Rockefeller Ave Everett WA 98201

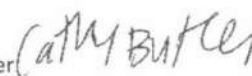
Client Sample ID	Lab Sample ID	Layer	Description	Matrix	% Non-Asbestos Fibers	% Asbestos Fibers and Type
80		1	Gray fibrous material	Filler/binder	5% Cellulose, Glass fibers	5% Chrysotile
		2	Brown fibrous material	Filler, Paint	90% Cellulose	None Detected
81		1	Brown tile	Vinyl/binder, Mineral grains	2% Cellulose	3% Chrysotile
		2	Black mastic	Mastic/binder	2% Cellulose	3% Chrysotile
82		1	Green tile	Vinyl/binder, Mineral grains	2% Cellulose	3% Chrysotile
		2	Black mastic	Mastic/binder	2% Cellulose	5% Chrysotile
83		1	Red tile	Vinyl/binder, Mineral grains	2% Cellulose	3% Chrysotile
		2	Black mastic	Mastic/binder	2% Cellulose	3% Chrysotile
84		1	White powdery/brittle material with paint	Filler/binder, Paint	3% Cellulose	None Detected
		2	White chalky material with paper	Filler/binder, Gypsum	25% Cellulose, Glass fibers	None Detected
85		1	Gray sandy/brittle material with paint	Filler, Binder, Sand, Paint	12% Cellulose	None Detected
86		1	Gray sandy/brittle material with paint	Filler, Binder, Sand, Paint	12% Cellulose	None Detected
87		1	Gray sandy/brittle material with paint	Filler, Binder, Sand, Paint	12% Cellulose	None Detected
88		1	Gray sandy/brittle material with paint	Filler, Binder, Sand, Paint	12% Cellulose	None Detected

Analyzed by: Dan Lafley



Report Page 12

Reviewed by: Cathy Butler





Asbestos Northwest, LLC
 30620 Pacific Hwy S, #103, Federal Way, WA 98003
 Ph: (253) 941-4343 Fax: (253) 941-4175



Batch Number: 202012857

PLM Analysis by EPA Method 600/M4-82-020 and 600/R-93/116

This report must not be used by the client to claim product certification, approval, or endorsement by NVLAP, NIST, or any agency of the U.S. Government.

Attn: Sean Bova
Ascendent LLC
219 12th St SE Puyallup, WA 98372

Date Received: 7/21/2020
Date Analyzed: 7/24/2020
Samples Received: 204
Samples Analyzed: 204

Project: YMCA
Location: 2765 Rockefeller Ave Everett WA 98201

Client Sample ID	Lab Sample ID	Layer	Description	Matrix	% Non-Asbestos Fibers	% Asbestos Fibers and Type
89		1	Black asphaltic fibrous material	Asphalt/binder	65% Cellulose	None Detected
90		1	White powdery material with paint and paper	Binder/filler, Paint	8% Cellulose	Composited to <1% Chrysotile
		2	White chalky material with paper	Filler/binder, Gypsum	25% Cellulose, Glass fibers	
91		1	White chalky material with paint and paper	Filler/binder, Gypsum, Paint	25% Cellulose, Glass fibers	None Detected
92		1	White powdery material with paint and paper	Binder/filler, Paint	8% Cellulose	Composited to <1% Chrysotile
		2	White chalky material with paper	Filler/binder, Gypsum	25% Cellulose, Glass fibers	
93		1	White chalky material with paint and paper	Filler/binder, Gypsum, Paint	25% Cellulose, Glass fibers	None Detected
94		1	White powdery material with paint and paper	Binder/filler, Paint	8% Cellulose	Composited to <1% Chrysotile
		2	White chalky material with paper	Filler/binder, Gypsum	25% Cellulose, Glass fibers	
95		1	White chalky material with paint and paper	Filler/binder, Gypsum, Paint	25% Cellulose, Glass fibers	None Detected
96		1	White powdery material with paint and paper	Binder/filler, Paint	8% Cellulose	Composited to <1% Chrysotile
		2	White chalky material with paper	Filler/binder, Gypsum	25% Cellulose, Glass fibers	
97		1	White powdery material with paint	Binder/filler, Paint	2% Cellulose	2% Chrysotile
		2	White chalky material with paper	Filler/binder, Gypsum	25% Cellulose, Glass fibers	None Detected

Analyzed by: Dan Lafley 

Report Page 13

Reviewed by: Cathy Butler 



Asbestos Northwest, LLC
30620 Pacific Hwy S, #103, Federal Way, WA 98003
Ph: (253) 941-4343 Fax: (253) 941-4175



Batch Number: 202012857

PLM Analysis by EPA Method 600/M4-82-020 and 600/R-93/116

This report must not be used by the client to claim product certification, approval, or endorsement by NVLAP, NIST, or any agency of the U.S. Government.

Attn: Sean Bova
Ascendent LLC
219 12th St SE Puyallup, WA 98372

Date Received: 7/21/2020
Date Analyzed: 7/24/2020
Samples Received: 204
Samples Analyzed: 204

Project: YMCA
Location: 2765 Rockefeller Ave Everett WA 98201

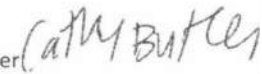
Client Sample ID	Lab Sample ID	Layer	Description	Matrix	% Non-Asbestos Fibers	% Asbestos Fibers and Type
98		1	Brown fibrous material with paint	Filler, Paint	90% Cellulose	None Detected
99		1	White fibrous material	Filler, binder	90% Cellulose, Synthetic fibers	None Detected
		2	Black asphaltic fibrous material	Filler, binder	45% Cellulose	None Detected
		3	Copper	Mastic/binder	None Detected	None Detected
100		1	White fibrous material	Filler, binder	90% Cellulose, Synthetic fibers	None Detected
		2	Black asphaltic fibrous material	Filler, binder	45% Cellulose	None Detected
		3	Copper	Mastic/binder	None Detected	None Detected
101		1	Brown fibrous material	Filler, binder	90% Cellulose	None Detected
		2	Black asphaltic fibrous material	Filler, binder	45% Cellulose	None Detected
		3	Copper	Mastic/binder	None Detected	None Detected
102		1	Black asphaltic material	Asphalt/binder	3% Cellulose	3% Chrysotile
		2	Black asphaltic fibrous material	Asphalt/binder	25% Cellulose	15% Chrysotile
103		1	Yellow sheet vinyl	Vinyl/binder	3% Cellulose	None Detected
		2	Black asphaltic fibrous material with Mastic	Asphalt/binder, Mastic	45% Cellulose, Synthetic fibers	None Detected

Analyzed by: Dan Lafley



Report Page 14

Reviewed by: Cathy Butler





Asbestos Northwest, LLC
 30620 Pacific Hwy S, #103, Federal Way, WA 98003
 Ph: (253) 941-4343 Fax: (253) 941-4175



Batch Number: 202012857

PLM Analysis by EPA Method 600/M4-82-020 and 600/R-93/116

This report must not be used by the client to claim product certification, approval, or endorsement by NVLAP, NIST, or any agency of the U.S. Government.

Attn: Sean Bova
Ascendent LLC
219 12th St SE Puyallup, WA 98372

Date Received: 7/21/2020
Date Analyzed: 7/24/2020
Samples Received: 204
Samples Analyzed: 204

Project: YMCA
Location: 2765 Rockefeller Ave Everett WA 98201


Client Sample ID	Lab Sample ID	Layer	Description	Matrix	% Non-Asbestos Fibers	% Asbestos Fibers and Type
104		1	Gray powdery material with fibrous material	Filler/binder	15% Cellulose, Glass fibers	None Detected
105		1	Silver foil	Foil/binder	None Detected	None Detected
		2	Orange fibrous material	Filler, Binder	80% Glass Fiber	None Detected
106		1	Gray powdery material with fibrous material	Filler/binder	15% Cellulose, Glass fibers	None Detected
107		1	Green tile	Vinyl/binder, Mineral grains	2% Cellulose	3% Chrysotile
		2	Black mastic	Mastic/binder	2% Cellulose	5% Chrysotile
108		1	Red tile	Vinyl/binder, Mineral grains	2% Cellulose	3% Chrysotile
		2	Black mastic	Mastic/binder	2% Cellulose	3% Chrysotile
109		1	Red tile	Vinyl/binder, Mineral grains	2% Cellulose	3% Chrysotile
		2	Black mastic	Mastic/binder	2% Cellulose	3% Chrysotile
110		1	Gray sandy/brittle material with paint	Filler, Binder, Sand, Paint	12% Cellulose	None Detected
111		1	Gray sandy/brittle material with paint	Filler, Binder, Sand, Paint	12% Cellulose	None Detected
112		1	Gray sandy/brittle material with paint	Filler, Binder, Sand, Paint	12% Cellulose	None Detected
113		1	Gray sandy/brittle material with paint	Filler, Binder, Sand, Paint	12% Cellulose	None Detected

Analyzed by: Dan Lafley



Report Page 15

Reviewed by: Cathy Butler





Asbestos Northwest, LLC
 30620 Pacific Hwy S, #103, Federal Way, WA 98003
 Ph: (253) 941-4343 Fax: (253) 941-4175



Batch Number: 202012857

PLM Analysis by EPA Method 600/M4-82-020 and 600/R-93/116

This report must not be used by the client to claim product certification, approval, or endorsement by NVLAP, NIST, or any agency of the U.S. Government.

Attn: Sean Bova
Ascendent LLC
219 12th St SE Puyallup, WA 98372

Date Received: 7/21/2020
Date Analyzed: 7/24/2020
Samples Received: 204
Samples Analyzed: 204

Project: YMCA
Location: 2765 Rockefeller Ave Everett WA 98201


Client Sample ID	Lab Sample ID	Layer	Description	Matrix	% Non-Asbestos Fibers	% Asbestos Fibers and Type
114		1	Gray sandy/brittle material with paint	Filler, Binder, Sand, Paint	12% Cellulose	None Detected
115		1	Gray sandy/brittle material with paint	Filler, Binder, Sand, Paint	12% Cellulose	None Detected
116		1	White chalky material with paint and paper	Filler/binder, Gypsum, Paint	25% Cellulose, Glass fibers	None Detected
117		1	Brown fibrous material with paint	Filler, Paint	90% Cellulose	None Detected
118		1	Black asphaltic material	Asphalt/binder	20% Cellulose	None Detected
		2	Wood	Wood Aggregates	100% Cellulose	None Detected
119		1	White fibrous material	Filler, binder	90% Cellulose, Synthetic fibers	None Detected
		2	Black asphaltic fibrous material	Filler, binder	45% Cellulose	None Detected
		3	Copper	Mastic/binder	None Detected	None Detected
120		1	Gray powdery material with woven fibrous material	Filler/binder	25% Cellulose, Glass fibers	None Detected
121		1	Yellow fibrous material	Filler, binder	90% Glass Fibers	None Detected
		2	Black asphaltic fibrous material	Filler, binder	45% Cellulose	None Detected
122		1	Yellow fibrous material	Filler, binder	90% Glass Fibers	None Detected
		2	Black asphaltic fibrous material	Filler, binder	45% Cellulose	None Detected

Analyzed by: Dan Lafley



Report Page 16

Reviewed by: Cathy Butler





Asbestos Northwest, LLC
 30620 Pacific Hwy S, #103, Federal Way, WA 98003
 Ph: (253) 941-4343 Fax: (253) 941-4175



Batch Number: 202012857

PLM Analysis by EPA Method 600/M4-82-020 and 600/R-93/116

This report must not be used by the client to claim product certification, approval, or endorsement by NVLAP, NIST, or any agency of the U.S. Government.

Attn: Sean Bova
 Ascendent LLC
 219 12th St SE Puyallup, WA 98372

Date Received: 7/21/2020
 Date Analyzed: 7/24/2020
 Samples Received: 204
 Samples Analyzed: 204

Project: YMCA
 Location: 2765 Rockefeller Ave Everett WA 98201

Client Sample ID	Lab Sample ID	Layer	Description	Matrix	% Non-Asbestos Fibers	% Asbestos Fibers and Type
123		1	Gray powdery material with woven fibrous material	Filler/binder	25% Cellulose, Glass fibers	None Detected
124		1	Gray fibrous material	Filler	10% Cellulose	70% Chrysotile
125		1	White powdery material with paint and paper	Binder/filler, Paint	5% Cellulose	Composited to <1% Chrysotile
		2	White chalky material with paper	Filler/binder, Gypsum	35% Cellulose	
126		1	White chalky material with paint and paper	Filler/binder, Gypsum, Paint	25% Cellulose	None Detected
127		1	White chalky material with paint and paper	Filler/binder, Gypsum, Paint	25% Cellulose	None Detected
128		1	White chalky material with paint and paper	Filler/binder, Gypsum, Paint	25% Cellulose	None Detected
129		1	White powdery material with paint and paper	Binder/filler, Paint	5% Cellulose	Composited to <1% Chrysotile
		2	White chalky material with paper	Filler/binder, Gypsum	35% Cellulose	
130		1	White powdery material with paint	Binder/filler, Paint	5% Cellulose	2% Chrysotile
		2	White chalky material with paper	Filler/binder, Gypsum	35% Cellulose	None Detected
131		1	Gray sandy/brittle material with paint	Filler, Binder, Sand, Paint	12% Cellulose	None Detected
132		1	Brown fibrous material with paint	Filler, Paint	90% Cellulose	None Detected

Analyzed by: Dan Lafley 

Report Page 17

Reviewed by: Cathy Butler 



Asbestos Northwest, LLC
 30620 Pacific Hwy S, #103, Federal Way, WA 98003
 Ph: (253) 941-4343 Fax: (253) 941-4175



Batch Number: 202012857

PLM Analysis by EPA Method 600/M4-82-020 and 600/R-93/116

This report must not be used by the client to claim product certification, approval, or endorsement by NVLAP, NIST, or any agency of the U.S. Government.

Attn: Sean Bova
Ascendent LLC
219 12th St SE Puyallup, WA 98372

Date Received: 7/21/2020
Date Analyzed: 7/24/2020
Samples Received: 204
Samples Analyzed: 204

Project: YMCA
Location: 2765 Rockefeller Ave Everett WA 98201

Client Sample ID	Lab Sample ID	Layer	Description	Matrix	% Non-Asbestos Fibers	% Asbestos Fibers and Type
133		1	Green tile	Vinyl/binder, Mineral grains	2% Cellulose	3% Chrysotile
		2	Black mastic	Mastic/binder	2% Cellulose	5% Chrysotile
134		1	White powdery material with paint	Binder/filler, Paint	5% Cellulose	2% Chrysotile
		2	Gray sandy/brittle material	Filler, Binder, Sand	12% Cellulose	None Detected
135		1	Tan fibrous material	Filler, binder	70% Cellulose, Synthetic fibers	None Detected
		2	White woven fibrous material	Filler, binder	70% Cellulose, Synthetic fibers	None Detected
		3	White powdery material	Mastic/binder	3% Cellulose	None Detected
136		1	White powdery material with paint	Binder/filler, Paint	2% Cellulose	None Detected
		2	Gray sandy/brittle material	Filler, Binder, Sand	12% Cellulose	None Detected
137		1	White powdery material with paint	Binder/filler, Paint	4% Cellulose	None Detected
		2	White powdery material with paper	Filler/binder	10% Cellulose	None Detected
		3	White chalky material with paper	Filler/binder, Gypsum	25% Cellulose	None Detected

Analyzed by: Dan Lafley



Report Page 18

Reviewed by: Cathy Butler





Asbestos Northwest, LLC
 30620 Pacific Hwy S, #103, Federal Way, WA 98003
 Ph: (253) 941-4343 Fax: (253) 941-4175



Batch Number: 202012857

PLM Analysis by EPA Method 600/M4-82-020 and 600/R-93/116

This report must not be used by the client to claim product certification, approval, or endorsement by NVLAP, NIST, or any agency of the U.S. Government.

Attn: Sean Bova
 Ascendent LLC
 219 12th St SE Puyallup, WA 98372

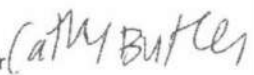
Date Received: 7/21/2020
 Date Analyzed: 7/24/2020
 Samples Received: 204
 Samples Analyzed: 204

Project: YMCA
 Location: 2765 Rockefeller Ave Everett WA 98201

Client Sample ID	Lab Sample ID	Layer	Description	Matrix	% Non-Asbestos Fibers	% Asbestos Fibers and Type
138		1	White powdery material with paint	Binder/filler, Paint	4% Cellulose	None Detected
		2	White powdery material with paper	Filler/binder	10% Cellulose	None Detected
		3	White chalky material with paper	Filler/binder, Gypsum	25% Cellulose	None Detected
139		1	Gray rubbery material	Rubber/binder	None Detected	None Detected
		2	Yellow mastic	Mastic/binder	2% Cellulose, Wollastonite	None Detected
140		1	White powdery material with paint and paper	Binder/filler, Paint	8% Cellulose	None Detected
		2	White chalky material with paper	Filler/binder, Gypsum	35% Cellulose	None Detected
141		1	White chalky material with paint and paper	Filler/binder, Gypsum, Paint	25% Cellulose, Glass fibers	None Detected
142		1	White powdery/brittle material with paint	Filler/binder, Paint	3% Cellulose	None Detected
		2	Gray sandy/brittle material	Filler, Binder, Sand	5% Cellulose	None Detected
143		1	White powdery/brittle material with paint	Filler/binder, Paint	3% Cellulose	None Detected
		2	Gray sandy/brittle material	Filler, Binder, Sand	5% Cellulose	None Detected

Analyzed by: Dan Lafley 

Report Page 19

Reviewed by: Cathy Butler 



Asbestos Northwest, LLC
 30620 Pacific Hwy S, #103, Federal Way, WA 98003
 Ph: (253) 941-4343 Fax: (253) 941-4175



Batch Number: 202012857

PLM Analysis by EPA Method 600/M4-82-020 and 600/R-93/116

This report must not be used by the client to claim product certification, approval, or endorsement by NVLAP, NIST, or any agency of the U.S. Government.

Attn: Sean Bova
Ascendent LLC
219 12th St SE Puyallup, WA 98372

Date Received: 7/21/2020
Date Analyzed: 7/24/2020
Samples Received: 204
Samples Analyzed: 204

Project: YMCA
Location: 2765 Rockefeller Ave Everett WA 98201

Client Sample ID	Lab Sample ID	Layer	Description	Matrix	% Non-Asbestos Fibers	% Asbestos Fibers and Type
144		1	White powdery/brittle material with paint	Filler/binder, Paint	3% Cellulose	None Detected
		2	Gray sandy/brittle material	Filler, Binder, Sand	5% Cellulose	None Detected
145		1	White powdery/brittle material with paint	Filler/binder, Paint	3% Cellulose	None Detected
		2	Gray sandy/brittle material	Filler, Binder, Sand	5% Cellulose	None Detected
146		1	Beige/tan tile	Vinyl/binder, Mineral grains	2% Cellulose	None Detected
		2	Yellow mastic	Mastic/binder	1% Cellulose	None Detected
		3	Brown tile	Vinyl/binder, Mineral grains	2% Cellulose, Wollastonite	None Detected
		4	Yellow mastic	Mastic/binder	1% Cellulose	None Detected
		5	Brown brittle material	Binder/filler	1% Cellulose, Talc	None Detected
		6	Brown sheet vinyl	Vinyl/binder	2% Cellulose	None Detected
		7	Tan wovens material with mastic	Filler, Mastic/binder	75% Cellulose	None Detected
147		1	Yellow mastic on brown brittle material	Binder/filler, Mastic	2% Cellulose, Talc	None Detected

Analyzed by: Dan Lafley 

Reviewed by: Cathy Butler 



Asbestos Northwest, LLC
30620 Pacific Hwy S, #103, Federal Way, WA 98003
Ph: (253) 941-4343 Fax: (253) 941-4175



Batch Number: 202012857

PLM Analysis by EPA Method 600/M4-82-020 and 600/R-93/116

This report must not be used by the client to claim product certification, approval, or endorsement by NVLAP, NIST, or any agency of the U.S. Government.

Attn: Sean Bova
Ascendent LLC
219 12th St SE Puyallup, WA 98372

Date Received: 7/21/2020
Date Analyzed: 7/24/2020
Samples Received: 204
Samples Analyzed: 204

Project: YMCA
Location: 2765 Rockefeller Ave Everett WA 98201

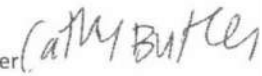
Client Sample ID	Lab Sample ID	Layer	Description	Matrix	% Non-Asbestos Fibers	% Asbestos Fibers and Type
148		1	Yellow mastic	Mastic/binder	1% Cellulose	None Detected
		2	Tan tile	Vinyl/binder, Mineral grains	2% Cellulose, Wollastonite	5% Chrysotile
		3	Black mastic	Mastic/binder	2% Cellulose	5% Chrysotile
149		1	Dark tan tile	Vinyl/binder, Mineral grains	2% Cellulose, Wollastonite	5% Chrysotile
		2	Black mastic	Mastic/binder	2% Cellulose	5% Chrysotile
150		1	Light gray tile	Vinyl/binder, Mineral grains	2% Cellulose, Wollastonite	3% Chrysotile
		2	Black mastic	Mastic/binder	2% Cellulose	5% Chrysotile
151		1	Gray tile	Vinyl/binder, Mineral grains	1% Cellulose	None Detected
		2	Yellow mastic	Mastic/binder	1% Cellulose	None Detected
		3	Gray tile	Vinyl/binder, Mineral grains	2% Cellulose, Wollastonite	None Detected
		4	Yellow mastic	Mastic/binder	1% Cellulose	None Detected
		5	Gray brittle material	Binder/filler	1% Cellulose, Talc	None Detected
		6	Redish brown sandy/brittle material	Filler, Binder, Sand	1% Cellulose	3% Chrysotile

Analyzed by: Dan Lafley



Report Page 21

Reviewed by: Cathy Butler





Asbestos Northwest, LLC
30620 Pacific Hwy S, #103, Federal Way, WA 98003
Ph: (253) 941-4343 Fax: (253) 941-4175



Batch Number: 202012857

PLM Analysis by EPA Method 600/M4-82-020 and 600/R-93/116

This report must not be used by the client to claim product certification, approval, or endorsement by NVLAP, NIST, or any agency of the U.S. Government.

Attn: Sean Bova
Ascendent LLC
219 12th St SE Puyallup, WA 98372

Date Received: 7/21/2020
Date Analyzed: 7/24/2020
Samples Received: 204
Samples Analyzed: 204

Project: YMCA
Location: 2765 Rockefeller Ave Everett WA 98201

Client Sample ID	Lab Sample ID	Layer	Description	Matrix	% Non-Asbestos Fibers	% Asbestos Fibers and Type
152		1	White powdery material with paint and paper	Binder/filler, Paint	10% Cellulose	None Detected
		2	White chalky material with paper	Filler/binder, Gypsum	25% Cellulose, Glass fibers	None Detected
153		1	White powdery material with paint	Binder/filler, Paint	2% Cellulose	None Detected
		2	White chalky material with paper	Filler/binder, Gypsum	25% Cellulose, Glass fibers	None Detected
154		1	White powdery material with paint	Binder/filler, Paint	2% Cellulose	None Detected
		2	White chalky material with paint and paper	Filler/binder, Gypsum, Paint	25% Cellulose, Glass fibers	None Detected
155		1	Gray fibrous material with paint	Filler, Perlite, Paint	90% Glass fibers, Cellulose	None Detected
156		1	Brown fibrous material with paint	Filler, Paint	90% Cellulose	None Detected
		2	Brown mastic	Mastic/binder	2% Cellulose, Wollastonite	None Detected
157		1	Tan tile	Vinyl/binder, Mineral grains	2% Cellulose, Wollastonite	5% Chrysotile
		2	Gray paint	Paint/binder	None Detected	None Detected
		3	Redish brown sandy/brittle material	Filler, Binder, Sand	1% Cellulose	3% Chrysotile
		4	Black asphaltic material	Asphalt/binder	2% Cellulose, Glass fibers, Delethalose	10% Chrysotile
158		1	Gray sandy/brittle material with paint	Filler, Binder, Sand, Paint	3% Cellulose	None Detected

Analyzed by: Dan Lafley 

Report Page 22

Reviewed by: Cathy Butler 



Asbestos Northwest, LLC
 30620 Pacific Hwy S, #103, Federal Way, WA 98003
 Ph: (253) 941-4343 Fax: (253) 941-4175



Batch Number: 202012857

PLM Analysis by EPA Method 600/M4-82-020 and 600/R-93/116

This report must not be used by the client to claim product certification, approval, or endorsement by NVLAP, NIST, or any agency of the U.S. Government.

Attn: Sean Bova
Ascendent LLC
219 12th St SE Puyallup, WA 98372

Date Received: 7/21/2020
Date Analyzed: 7/24/2020
Samples Received: 204
Samples Analyzed: 204

Project: YMCA
Location: 2765 Rockefeller Ave Everett WA 98201

Client Sample ID	Lab Sample ID	Layer	Description	Matrix	% Non-Asbestos Fibers	% Asbestos Fibers and Type
159		1	Gray sandy/brittle material with paint	Filler, Binder, Sand, Paint	3% Cellulose	None Detected
160		1	Gray tile	Vinyl/binder, Mineral grains	1% Cellulose	None Detected
		2	Yellow mastic	Mastic/binder	1% Cellulose	None Detected
		3	Tan tile	Vinyl/binder, Mineral grains	2% Cellulose, Wollastonite	5% Chrysotile
		4	Black mastic	Mastic/binder	2% Cellulose	5% Chrysotile
		5	Redish brown sandy/brittle material	Filler, Binder, Sand	1% Cellulose	3% Chrysotile
161		1	White powdery material with paint	Binder/filler, Paint	5% Cellulose	None Detected
		2	Gray sandy/brittle material	Filler, Binder, Sand	12% Cellulose	None Detected
162		1	Brown fibrous material with paint	Filler, Paint	90% Cellulose	None Detected
163		1	Green tile	Vinyl/binder, Mineral grains	2% Cellulose, Wollastonite	2% Chrysotile
		2	Black mastic	Mastic/binder	2% Cellulose	3% Chrysotile
		3	Redish brown sandy/brittle material	Filler, Binder, Sand	1% Cellulose	3% Chrysotile

Analyzed by: Dan Lafley



Report Page 23

Reviewed by: Cathy Butler





Asbestos Northwest, LLC
30620 Pacific Hwy S, #103, Federal Way, WA 98003
Ph: (253) 941-4343 Fax: (253) 941-4175



Batch Number: 202012857

PLM Analysis by EPA Method 600/M4-82-020 and 600/R-93/116

This report must not be used by the client to claim product certification, approval, or endorsement by NVLAP, NIST, or any agency of the U.S. Government.

Attn: Sean Bova
Ascendent LLC
219 12th St SE Puyallup, WA 98372

Date Received: 7/21/2020
Date Analyzed: 7/24/2020
Samples Received: 204
Samples Analyzed: 204

Project: YMCA
Location: 2765 Rockefeller Ave Everett WA 98201

Client Sample ID	Lab Sample ID	Layer	Description	Matrix	% Non-Asbestos Fibers	% Asbestos Fibers and Type
164		1	Gray tile	Vinyl/binder, Mineral grains	1% Cellulose	None Detected
		2	Yellow mastic	Mastic/binder	1% Cellulose	None Detected
		3	Gray tile	Vinyl/binder, Mineral grains	2% Cellulose, Wollastonite	None Detected
		4	Yellow mastic	Mastic/binder	1% Cellulose	None Detected
		5	Red tile	Vinyl/binder, Mineral grains	2% Cellulose, Wollastonite	3% Chrysotile
		6	Black mastic	Mastic/binder	2% Cellulose	2% Chrysotile
165		1	Brown tile	Vinyl/binder, Mineral grains	2% Cellulose, Wollastonite	3% Chrysotile
		2	Black mastic	Mastic/binder	2% Cellulose	3% Chrysotile
		3	Redish brown sandy/brittle material	Filler, Binder, Sand	1% Cellulose	3% Chrysotile
166		1	White powdery material with paint and paper	Binder/filler, Paint	8% Cellulose	None Detected
		2	White chalky material with paper	Filler/binder, Gypsum	35% Cellulose	None Detected
167		1	White powdery material with paint	Binder/filler, Paint	4% Cellulose	None Detected
		2	White chalky material with paper	Filler/binder, Gypsum	25% Cellulose	None Detected
168		1	Gray sandy/brittle material with paint	Filler, Binder, Sand, Paint	10% Cellulose	None Detected

Analyzed by: Dan Lafley



Report Page 24

Reviewed by: Cathy Butler





Asbestos Northwest, LLC
30620 Pacific Hwy S, #103, Federal Way, WA 98003
Ph: (253) 941-4343 Fax: (253) 941-4175



Batch Number: 202012857

PLM Analysis by EPA Method 600/M4-82-020 and 600/R-93/116

This report must not be used by the client to claim product certification, approval, or endorsement by NVLAP, NIST, or any agency of the U.S. Government.

Attn: Sean Bova
Ascendent LLC
219 12th St SE Puyallup, WA 98372

Date Received: 7/21/2020
Date Analyzed: 7/24/2020
Samples Received: 204
Samples Analyzed: 204

Project: YMCA
Location: 2765 Rockefeller Ave Everett WA 98201

Client Sample ID	Lab Sample ID	Layer	Description	Matrix	% Non-Asbestos Fibers	% Asbestos Fibers and Type
169		1	Gray tile	Vinyl/binder, Mineral grains	1% Cellulose	None Detected
		2	Yellow mastic	Mastic/binder	1% Cellulose	None Detected
		3	Red tile	Vinyl/binder, Mineral grains	2% Cellulose, Wollastonite	3% Chrysotile
		4	Black mastic	Mastic/binder	2% Cellulose	2% Chrysotile
170		1	White powdery material with paint	Binder/filler, Paint	4% Cellulose	None Detected
		2	White chalky material with paper	Filler/binder, Gypsum	25% Cellulose	None Detected
171		1	White powdery material with paint	Binder/filler, Paint	4% Cellulose	None Detected
		2	White chalky material with paper	Filler/binder, Gypsum	25% Cellulose	None Detected
172		1	White powdery material with paint	Binder/filler, Paint	2% Cellulose	None Detected
		2	White chalky material with paper	Filler/binder, Gypsum	25% Cellulose	None Detected
173		1	White powdery material with paint	Binder/filler, Paint	2% Cellulose	None Detected
		2	White chalky material with paper	Filler/binder, Gypsum	25% Cellulose	None Detected
174		1	White powdery material with paint and paper	Binder/filler, Paint	8% Cellulose	None Detected
		2	Gray sandy/brittle material	Filler, Binder, Sand	5% Cellulose	None Detected

Analyzed by: Dan Lafley 

Reviewed by: Cathy Butler 



Asbestos Northwest, LLC
 30620 Pacific Hwy S, #103, Federal Way, WA 98003
 Ph: (253) 941-4343 Fax: (253) 941-4175



Batch Number: 202012857

PLM Analysis by EPA Method 600/M4-82-020 and 600/R-93/116

This report must not be used by the client to claim product certification, approval, or endorsement by NVLAP, NIST, or any agency of the U.S. Government.

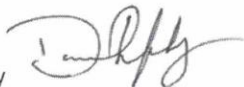
Attn: Sean Bova
Ascendent LLC
219 12th St SE Puyallup, WA 98372

Date Received: 7/21/2020
Date Analyzed: 7/24/2020
Samples Received: 204
Samples Analyzed: 204

Project: YMCA
Location: 2765 Rockefeller Ave Everett WA 98201

Client Sample ID	Lab Sample ID	Layer	Description	Matrix	% Non-Asbestos Fibers	% Asbestos Fibers and Type
175		1	Red tile	Vinyl/binder, Mineral grains	2% Cellulose, Wollastonite	3% Chrysotile
		2	Black mastic	Mastic/binder	2% Cellulose	2% Chrysotile
176		1	Gray rubbery material	Rubber/binder	None Detected	None Detected
		2	Yellow mastic	Mastic/binder	2% Cellulose, Wollastonite	None Detected
177		1	Brown fibrous material with paint	Filler, Paint	90% Cellulose	None Detected
		2	Brown mastic	Mastic/binder	4% Cellulose, Wollastonite	None Detected
178		1	Black rubbery material	Rubber/binder	None Detected	None Detected
		2	White mastic	Mastic/binder	2% Cellulose, Wollastonite	None Detected
179		1	Gray fibrous material	Filler	10% Cellulose	60% Chrysotile
180		1	Gray sandy/brittle material with paint	Filler, Binder, Sand, Paint	5% Cellulose	None Detected
181		1	Yellow mastic	Mastic/binder	1% Cellulose	None Detected
		2	Tan tile	Vinyl/binder, Mineral grains	2% Cellulose, Wollastonite	5% Chrysotile
		3	Black mastic	Mastic/binder	2% Cellulose	5% Chrysotile

Analyzed by: Dan Lafley



Report Page 26

Reviewed by: Cathy Butler





Asbestos Northwest, LLC
 30620 Pacific Hwy S, #103, Federal Way, WA 98003
 Ph: (253) 941-4343 Fax: (253) 941-4175



Batch Number: 202012857

PLM Analysis by EPA Method 600/M4-82-020 and 600/R-93/116

This report must not be used by the client to claim product certification, approval, or endorsement by NVLAP, NIST, or any agency of the U.S. Government.


Attn: Sean Bova
Ascendent LLC
219 12th St SE Puyallup, WA 98372

Date Received: 7/21/2020
Date Analyzed: 7/24/2020
Samples Received: 204
Samples Analyzed: 204

Project: YMCA
Location: 2765 Rockefeller Ave Everett WA 98201

Client Sample ID	Lab Sample ID	Layer	Description	Matrix	% Non-Asbestos Fibers	% Asbestos Fibers and Type
182		1	Yellow mastic and black mastic	Mastic/binder	2% Cellulose	3% Chrysotile
183		1	Yellow mastic	Mastic/binder	1% Cellulose	None Detected
		2	Green tile	Vinyl/binder, Mineral grains	2% Cellulose, Wollastonite	2% Chrysotile
		3	Black mastic	Mastic/binder	2% Cellulose	3% Chrysotile
184		1	White chalky material with paint and paper	Filler/binder, Gypsum, Paint	25% Cellulose, Glass fibers	None Detected
185		1	White powdery material with paint and paper	Binder/filler, Paint	10% Cellulose	None Detected
		2	White chalky material with paper	Filler/binder, Gypsum	25% Cellulose, Glass fibers	None Detected
186		1	White powdery material with paint	Binder/filler, Paint	2% Cellulose	None Detected
		2	White powdery/brittle material with paint	Filler/binder, Paint	3% Cellulose	None Detected
187		1	Tan tile	Vinyl/binder, Mineral grains	2% Cellulose, Wollastonite	3% Chrysotile
		2	Black mastic	Mastic/binder	2% Cellulose	5% Chrysotile
		3	Red tile	Vinyl/binder, Mineral grains	2% Cellulose, Wollastonite	3% Chrysotile
		4	Black mastic	Mastic/binder	2% Cellulose	5% Chrysotile

Analyzed by: Dan Lafley



Report Page 27

Reviewed by: Cathy Butler





Asbestos Northwest, LLC
 30620 Pacific Hwy S, #103, Federal Way, WA 98003
 Ph: (253) 941-4343 Fax: (253) 941-4175



Batch Number: 202012857

PLM Analysis by EPA Method 600/M4-82-020 and 600/R-93/116

This report must not be used by the client to claim product certification, approval, or endorsement by NVLAP, NIST, or any agency of the U.S. Government.

Attn: Sean Bova
Ascendent LLC
219 12th St SE Puyallup, WA 98372

Date Received: 7/21/2020
Date Analyzed: 7/24/2020
Samples Received: 204
Samples Analyzed: 204

Project: YMCA
Location: 2765 Rockefeller Ave Everett WA 98201

Client Sample ID	Lab Sample ID	Layer	Description	Matrix	% Non-Asbestos Fibers	% Asbestos Fibers and Type
188		1	White powdery material with fibrous material	Filler/binder	20% Cellulose, Glass fibers	40% Chrysotile, Amosite
189		2	White powdery material with fibrous material	Filler/binder	20% Cellulose, Glass fibers	40% Chrysotile, Amosite
190		1	Brown fibrous material	Filler, Bindert	60% Cellulose	20% Chrysotile
191		1	Tan brittle material	Binder/filler	None Detected	None Detected
192		1	White woven material with gray paint	Filler, binder	20% Cellulose	60% Chrysotile
193		1	Gray fibrous material	Filler	90% Glass fibers	None Detected
194		1	Gray woven material	Filler, binder	80% Glass fibers	None Detected
		2	Black rubbery material surrounding metal	Rubber/binder	None Detected	None Detected
195		1	Black asphaltic fibrous material	Asphalt/binder	80% Cellulose, Glass Fibers	None Detected
		2	White woven fibrous material	Filler, binder	70% Cellulose, Synthetic fibers	None Detected
		2	Silver foil	Foil/binder	None Detected	None Detected
		3	Brown fibrous material	Filler, Binder	70% Cellulose	None Detected
		4	Yellow fibrous material	Filler	70% Glass fibers	None Detected

Analyzed by: Dan Lafley



Report Page 28

Reviewed by: Cathy Butler





Asbestos Northwest, LLC
 30620 Pacific Hwy S, #103, Federal Way, WA 98003
 Ph: (253) 941-4343 Fax: (253) 941-4175



Batch Number: 202012857

PLM Analysis by EPA Method 600/M4-82-020 and 600/R-93/116

This report must not be used by the client to claim product certification, approval, or endorsement by NVLAP, NIST, or any agency of the U.S. Government.


Attn: Sean Bova
Ascendent LLC
219 12th St SE Puyallup, WA 98372

Date Received: 7/21/2020
Date Analyzed: 7/24/2020
Samples Received: 204
Samples Analyzed: 204

Project: YMCA
Location: 2765 Rockefeller Ave Everett WA 98201

Client Sample ID	Lab Sample ID	Layer	Description	Matrix	% Non-Asbestos Fibers	% Asbestos Fibers and Type
196		1	White powdery/brittle material	Filler/binder	20% Cellulose, Glass fibers	None Detected
197		1	Black asphaltic material with sand	Asphalt/binder, Sand	50% Cellulose, Glass fibers, Polyethylene	None Detected
		2	Black asphaltic material	Asphalt/binder	5% Cellulose	None Detected
198		1	Black asphaltic material	Asphalt/binder	5% Cellulose, Glass fibers, Polyethylene	None Detected
		2	Black asphaltic fibrous material	Asphalt/binder	80% Glass Fibers, Cellulose	None Detected
		3	Black asphaltic material	Asphalt/binder	5% Cellulose, Glass fibers, Polyethylene	None Detected
		4	Black asphaltic fibrous material	Asphalt/binder	80% Glass Fibers, Cellulose	None Detected
		5	Black asphaltic material	Asphalt/binder	5% Cellulose, Glass fibers, Polyethylene	None Detected
		6	Black asphaltic fibrous material	Asphalt/binder	80% Glass Fibers, Cellulose	None Detected
		7	Black asphaltic material	Asphalt/binder	5% Cellulose, Glass fibers, Polyethylene	None Detected
		8	Brown fibrous material	Filler, Bindetr	90% Cellulose	None Detected

Analyzed by: Dan Lafley



Report Page 29

Reviewed by: Cathy Butler





Asbestos Northwest, LLC
 30620 Pacific Hwy S, #103, Federal Way, WA 98003
 Ph: (253) 941-4343 Fax: (253) 941-4175



Batch Number: 202012857

PLM Analysis by EPA Method 600/M4-82-020 and 600/R-93/116

This report must not be used by the client to claim product certification, approval, or endorsement by NVLAP, NIST, or any agency of the U.S. Government.

Attn: Sean Bova
Ascendent LLC
219 12th St SE Puyallup, WA 98372

Date Received: 7/21/2020
Date Analyzed: 7/24/2020
Samples Received: 204
Samples Analyzed: 204

Project: YMCA
Location: 2765 Rockefeller Ave Everett WA 98201

Client Sample ID	Lab Sample ID	Layer	Description	Matrix	% Non-Asbestos Fibers	% Asbestos Fibers and Type
199		1	Black asphaltic material	Asphalt/binder	5% Cellulose, Glass fibers	None Detected
		2	Black asphaltic fibrous material	Asphalt/binder	80% Cellulose	None Detected
		3	Black asphaltic material	Asphalt/binder	5% Cellulose, Glass fibers, Polyethylene	None Detected
		4	Black asphaltic material with sand	Asphalt/binder, Sand	2% Cellulose, Glass fibers, Polyethylene	None Detected
		5	Black asphaltic material	Asphalt/binder	5% Cellulose, Glass fibers	None Detected
		6	Black asphaltic fibrous material	Asphalt/binder	80% Cellulose	None Detected
		7	Black asphaltic material	Asphalt/binder	1% Cellulose	None Detected
		8	Black asphaltic fibrous material	Asphalt/binder	80% Glass fibers, Cellulose	None Detected
		9	Brown fibrous material	Filler, Bindetr	90% Cellulose	None Detected

Analyzed by: Dan Lafley



Report Page 30

Reviewed by: Cathy Butler





Asbestos Northwest, LLC
 30620 Pacific Hwy S, #103, Federal Way, WA 98003
 Ph: (253) 941-4343 Fax: (253) 941-4175



Batch Number: 202012857

PLM Analysis by EPA Method 600/M4-82-020 and 600/R-93/116

This report must not be used by the client to claim product certification, approval, or endorsement by NVLAP, NIST, or any agency of the U.S. Government.

Attn: Sean Bova
Ascendent LLC
219 12th St SE Puyallup, WA 98372

Date Received: 7/21/2020
Date Analyzed: 7/24/2020
Samples Received: 204
Samples Analyzed: 204

Project: YMCA
Location: 2765 Rockefeller Ave Everett WA 98201

Client Sample ID	Lab Sample ID	Layer	Description	Matrix	% Non-Asbestos Fibers	% Asbestos Fibers and Type
200		1	Black asphaltic material	Asphalt/binder	5% Cellulose, Glass fibers	None Detected
		2	Black asphaltic fibrous material	Asphalt/binder	80% Cellulose	None Detected
		3	Black asphaltic material	Asphalt/binder	5% Cellulose, Glass fibers, Polyethylene	None Detected
		4	Black asphaltic material with sand	Asphalt/binder, Sand	2% Cellulose, Glass fibers, Polyethylene	None Detected
		5	Black asphaltic material	Asphalt/binder	5% Cellulose, Glass fibers	None Detected
		6	Black asphaltic fibrous material	Asphalt/binder	80% Cellulose	None Detected
		7	Black asphaltic material	Asphalt/binder	1% Cellulose	None Detected
		8	Black asphaltic fibrous material	Asphalt/binder	80% Glass fibers, Cellulose	None Detected
		9	Brown fibrous material	Filler, Bindetr	90% Cellulose	None Detected

Analyzed by: Dan Lafley



Report Page 31

Reviewed by: Cathy Butler





Asbestos Northwest, LLC
30620 Pacific Hwy S, #103, Federal Way, WA 98003
Ph: (253) 941-4343 Fax: (253) 941-4175



Batch Number: 202012857

PLM Analysis by EPA Method 600/M4-82-020 and 600/R-93/116

This report must not be used by the client to claim product certification, approval, or endorsement by NVLAP, NIST, or any agency of the U.S. Government.

Attn: Sean Bova
Ascendent LLC
219 12th St SE Puyallup, WA 98372

Date Received: 7/21/2020
Date Analyzed: 7/24/2020
Samples Received: 204
Samples Analyzed: 204

Project: YMCA
Location: 2765 Rockefeller Ave Everett WA 98201

Client Sample ID	Lab Sample ID	Layer	Description	Matrix	% Non-Asbestos Fibers	% Asbestos Fibers and Type
201		1	Black asphaltic fibrous material	Asphalt/binder	80% Glass fibers, Cellulose	None Detected
		2	Black asphaltic material	Asphalt/binder	5% Cellulose, Glass fibers	None Detected
		3	Black asphaltic fibrous material	Asphalt/binder	80% Glass fibers, Cellulose	None Detected
		4	Black asphaltic material	Asphalt/binder	5% Cellulose, Glass fibers, Polyethylene	None Detected
		5	Black asphaltic fibrous material	Asphalt/binder	80% Glass fibers, Cellulose	None Detected
		6	Brown fibrous material	Filler, Bindetr	90% Cellulose, Glass fibers	None Detected
202		1	Black asphaltic fibrous material	Asphalt/binder	80% Glass fibers, Cellulose	None Detected
		2	Black asphaltic material	Asphalt/binder	5% Cellulose, Glass fibers	None Detected
		3	Black asphaltic fibrous material	Asphalt/binder	80% Glass fibers, Cellulose	None Detected
		4	Black asphaltic material	Asphalt/binder	5% Cellulose, Glass fibers, Polyethylene	None Detected
		5	Black asphaltic fibrous material	Asphalt/binder	80% Glass fibers, Cellulose	None Detected
		6	Brown fibrous material	Filler, Bindetr	90% Cellulose, Glass fibers	None Detected
203		1	Gray brittle material	Binder/filler	2% Cellulose, Talc	None Detected
204		1	Black asphaltic material	Asphalt/binder	5% Cellulose, Glass fibers	2% Chrysotile

Analyzed by: Dan Lafley 

Report Page 32

Reviewed by: Cathy Butler 



30620 Pacific Hwy S, #103, Federal Way, WA 98003
 Ph: (253) 941-4343 Fax: (253) 941-4175
 NVLAP Lab Code: 200993-0

Batch # 202012857

PLM Point Count
400 Points

This report must not be used by the client to claim product certification, approval, or endorsement by NVLAP, NIST, or any agency of the U.S. Government.

Attn: Sean Bova
 Ascendent LLC
 219 12th St SE Puyallup, WA 98372

Date Received: 7/21/2020
 Date Analyzed: 8/4/2020
 Samples Received: 204
 Samples Analyzed: 3
 Project #: YMCA

Project: 2765 Rockefeller Ave Everett WA 98201

Previous Analytical Information:

Client Sample ID	Lab Sample ID	Layer	Description	Matrix	% Non-Asbestos Fibers	% Asbestos Fibers
97		1	White powdery material with paint	Binder/filler, Paint	2% Cellulose	2% Chrysotile

Asbestos Points Counted: 3
 Non-asbestos Points Counted: 397
 Total Points Counted: 400

New Percentage:
0.75% Chrysotile

Previous Analytical Information:

Client Sample ID	Lab Sample ID	Layer	Description	Matrix	% Non-Asbestos Fibers	% Asbestos Fibers
130		1	White powdery material with paint	Binder/filler, Paint	5% Cellulose	2% Chrysotile

Asbestos Points Counted: 3
 Non-asbestos Points Counted: 397
 Total Points Counted: 400

New Percentage:
0.75% Chrysotile

Analyzed By: Dan Lafley



30620 Pacific Hwy S, #103, Federal Way, WA 98003
 Ph: (253) 941-4343 Fax: (253) 941-4175
 NVLAP Lab Code: 200993-0

Batch # 202012857

PLM Point Count
400 Points

This report must not be used by the client to claim product certification, approval, or endorsement by NVLAP, NIST, or any agency of the U.S. Government.

Attn: Sean Bova
 Ascendent LLC
 219 12th St SE Puyallup, WA 98372

Date Received: 7/21/2020
 Date Analyzed: 8/4/2020
 Samples Received: 204
 Samples Analyzed: 3
 Project #: YMCA

Project: 2765 Rockefeller Ave Everett WA 98201

Previous Analytical Information:

Client Sample ID	Lab Sample ID	Layer	Description	Matrix	% Non-Asbestos Fibers	% Asbestos Fibers
134		1	White powdery material with paint	Binder/filler, Paint	5% Cellulose	2% Chrysotile

Asbestos Points Counted: 2
 Non-asbestos Points Counted: 398
 Total Points Counted: 400

New Percentage:
0.50% Chrysotile

Analyzed By: Dan Lafley

July 30, 2020

Sean Butler

Asbestos NW

30620 Pacific Highway S #103
Federal Way, WA 98003



NVL Batch # 2012646.00

RE: Total Metal Analysis
Method: EPA 7000B Lead by FAA <paint>
Item Code: FAA-02

Client Project: ASC 1
Location: 2765 Rockefeller Ave Everett, WA 98201

Dear Mr. Butler,

NVL Labs received 15 sample(s) for the said project on 7/27/2020. Preparation of these samples was conducted following protocol outlined in EPA 3051/7000B , unless stated otherwise. Analysis of these samples was performed using analytical instruments in accordance with EPA 7000B Lead by FAA <paint>. The results are usually expressed in mg/Kg and percentage (%). Test results are not blank corrected.

For recent regulation updates pertaining to current regulatory levels or permissible exposure levels, please call your local regulatory agencies for more detail.

At NVL Labs all analyses are performed under strict guidelines of the Quality Assurance Program. This report is considered highly confidential and will not be released without your approval. Samples are archived after two weeks from the analysis date. Please feel free to contact us at 206-547-0100, in case you have any questions or concerns.

Sincerely,

A handwritten signature in black ink, appearing to read "Shalini Patel".

Shalini Patel, Lab Supervisor



Enc.: Sample results



Phone: 206 547.0100 | Fax: 206 634.1936 | Toll Free: 1.888.NVL.LABS (685.5227)
4708 Aurora Avenue North | Seattle, WA 98103-6516

Analysis Report

Total Lead (Pb)



Client: Asbestos NW
 Address: 30620 Pacific Highway S #103
 Federal Way, WA 98003

Batch #: 2012646.00

Matrix: Paint
 Method: EPA 3051/7000B
 Client Project #: ASC 1
 Date Received: 7/27/2020
 Samples Received: 15
 Samples Analyzed: 15

Attention: Mr. Sean Butler

Project Location: 2765 Rockefeller Ave Everett, WA 98201

Lab ID	Client Sample #	Sample Weight (g)	RL in mg/Kg	Results in mg/Kg	Results in percent
20085971	1	0.2030	49	< 49	<0.0049
20085972	2	0.1938	52	< 52	<0.0052
20085973	3	0.1887	53	< 53	<0.0053
20085974	4	0.1928	52	< 52	<0.0052
20085975	5	0.1703	59	< 59	<0.0059
20085976	6	0.1381	72	< 72	<0.0072
20085977	7	0.1959	51	2300	0.23
20085978	8	0.1050	95	1700	0.17
20085979	9	0.1936	52	900	0.090
20085980	10	0.1815	55	3300	0.33
20085981	11	0.1995	50	2900	0.29
20085982	12	0.1140	88	53000	5.3
20085983	13	0.1983	50	7900	0.79
20085984	14	0.1971	51	< 51	<0.0051
20085985	15	0.1841	54	5600	0.56


Sampled by: Client

Analyzed by: Yasuyuki Hida

Reviewed by: Shalini Patel

Date Analyzed: 07/28/2020

Date Issued: 07/30/2020


 Shalini Patel, Lab Supervisor

mg/ Kg =Milligrams per kilogram

Percent = Milligrams per kilogram / 10000

Note : Method QC results are acceptable unless stated otherwise.

Unless otherwise indicated, the condition of all samples was acceptable at time of receipt.

RL = Reporting Limit

'<' = Below the reporting Limit

Bench Run No: 2020-0728-6

FAA-02

LEAD LABORATORY SERVICES



Company Asbestos NW	NVL Batch Number 2012646.00
Address 30620 Pacific Highway S #103 Federal Way, WA 98003	TAT 1 Day AH No
Project Manager Mr. Sean Butler	Rush TAT
Phone (253) 941-4343	Due Date 7/29/2020 Time 1:10 PM
	Email seanb@asbestosnw.com
	Fax

Project Name/Number: ASC 1 **Project Location:** 2765 Rockefeller Ave Everett, WA 98201

Subcategory Flame AA (FAA)
Item Code FAA-02 EPA 7000B Lead by FAA <paint>

Total Number of Samples 15 **Rush Samples**

Lab ID	Sample ID	Description	A/R
1	20085971	1	A
2	20085972	2	A
3	20085973	3	A
4	20085974	4	A
5	20085975	5	A
6	20085976	6	A
7	20085977	7	A
8	20085978	8	A
9	20085979	9	A
10	20085980	10	A
11	20085981	11	A
12	20085982	12	A
13	20085983	13	A
14	20085984	14	A
15	20085985	15	A

	Print Name	Signature	Company	Date	Time
Sampled by	Client				
Relinquished by	Drop Box				

Office Use Only	Print Name	Signature	Company	Date	Time
Received by	Kelly AuVu		NVL	7/27/20	1530
Analyzed by	Yasuyuki Hida		NVL	7/28/20	
Results Called by					
<input type="checkbox"/> Faxed <input type="checkbox"/> Emailed					

Special Instructions: Received completed COC and CC payment 7/28 at 1310 -KA

Date: 7/28/2020
 Time: 1:52 PM
 Entered By: Kelly AuVu



METALS CHAIN OF CUSTODY

Turn Around Time

- 2 Hour
- 4 Hours
- 4 Hours
- 2 Days
- 3 Days
- 4 Days
- 5 Days
- 6-10 Days

Please call for TAT less than 24 Hours

Company Asbestos Northwest
 Address 30620 Pacific Hwy S #103
Federal Way WA 98003
 Phone 253-941-4343

Project Manager Sean Butler
 Cell ()
 Email seanb@asbestosnw.com
 Fax ()

Project Name/Number ASCA Project Location 2765 Rockefeller Ave Everett WA 98201

- | | | | | | | |
|---------------------------------------|-------------------------------------|---|---|-------------------------------|--|-----------------------------------|
| <input type="checkbox"/> Total Metals | <input type="checkbox"/> FAA (ppm) | <input type="checkbox"/> Air Filter | <input checked="" type="checkbox"/> Paint Chips (%) | <input type="checkbox"/> Soil | RCRA 8 | RCRA 11 |
| <input type="checkbox"/> TCLP | <input type="checkbox"/> ICP (PPM) | <input type="checkbox"/> Paint Chips (cm) | <input type="checkbox"/> Dust Wipes | | <input type="checkbox"/> Barium | <input type="checkbox"/> Chromium |
| | <input type="checkbox"/> GFAA (ppb) | <input type="checkbox"/> Drinking Water | <input type="checkbox"/> Waste Water | | <input type="checkbox"/> Arsenic | <input type="checkbox"/> Mercury |
| | <input type="checkbox"/> CVAA (ppb) | <input type="checkbox"/> Other | | | <input checked="" type="checkbox"/> Lead | <input type="checkbox"/> Silver |
| | | | | | <input type="checkbox"/> Selenium | <input type="checkbox"/> Cadmium |
| | | | | | | <input type="checkbox"/> Copper |
| | | | | | | <input type="checkbox"/> Zinc |
| | | | | | | <input type="checkbox"/> Other |

Reporting Instructions email to Sean
 Call () Fax () Email seanb@asbestosnw.com

Total Number of Samples ~~10~~ 15

Sample ID	Description	A/R
1	Paint on SW Court wall	
2	Paint from 4th floor NW stairwell wall	
3	Paint from 3rd floor E office wall	
4	Paint from 3rd floor lobby wall	
5	Paint from 3rd floor lobby door frame	
6	Paint from mens locker door frame	
7	Paint from 5th floor hall wall	
8	Paint from 5th floor north door frame	
9	Paint from 5th floor NE room wall	
10	Paint from 4th floor stairwell wall	
11	Paint from 4th floor SW room wall	
12	Paint from 20's gym wall	
13	Paint from 3rd floor conference room wall	
14	Paint from SE main floor room under	
15	Paint from main entrance wall	

	Print Name	Signature	Company	Date	Time
Sampled by	Sean Butler		Asbestos NW	7-20-20	4pm
Relinquish by	Sean Butler		Asbestos NW	7-27-20	3:25pm

Office Use Only

	Print Name	Signature	Company	Date	Time
Received by	Kenneth		NVL	7/27/20	15:30
Analyzed by					
Called by					
Faxed/Email by					



METALS CHAIN OF CUSTODY

Turn Around Time

- 2 Hour 4 Hours 24 Hours
 2 Days 3 Days 4 Days
 5 Days 6-10 Days

Please call for TAT less than 24 Hours

Company Asbestos Northwest
 Address 30620 Pacific Hwy S #103
Federal Way WA 98003
 Phone 253-941-4343

Project Manager Sean Butler
 Cell ()
 Email Seanb@asbestosnw.com
 Fax ()

Project Name/Number ASC1 Project Location 2765 Rockefeller Ave Everett WA 98201

- | | | | | | | |
|---------------------------------------|-------------------------------------|---|---|-------------------------------|---|---------------------------------|
| <input type="checkbox"/> Total Metals | <input type="checkbox"/> FAA (ppm) | <input type="checkbox"/> Air Filter | <input checked="" type="checkbox"/> Paint Chips (%) | <input type="checkbox"/> Soil | RCRA 8 | RCRA 11 |
| <input type="checkbox"/> TCLP | <input type="checkbox"/> ICP (PPM) | <input type="checkbox"/> Paint Chips (cm) | <input type="checkbox"/> Dust Wipes | | <input type="checkbox"/> Barium <input type="checkbox"/> Chromium <input type="checkbox"/> Silver | <input type="checkbox"/> Copper |
| | <input type="checkbox"/> GFAA (ppb) | <input type="checkbox"/> Drinking Water | <input type="checkbox"/> Waste Water | | <input type="checkbox"/> Arsenic <input type="checkbox"/> Mercury <input type="checkbox"/> Lead | <input type="checkbox"/> Zinc |
| | <input type="checkbox"/> CVAA (ppb) | <input type="checkbox"/> Other | | | <input type="checkbox"/> Selenium <input type="checkbox"/> Cadmium | <input type="checkbox"/> Other |

Reporting Instructions email to Sean
 Call () Fax () Email Seanb@asbestosnw.com

Total Number of Samples 15

Sample ID	Description	A/R
1	Paint on SW Corrd wall	
2	Paint from 4th floor NU stairwell wall	
3	Paint from 3rd floor E office wall	
4	Paint from 3rd floor lobby wall	
5	Paint from 3rd floor lobby door frame	
6	Paint from mens locker door frame	
7	Paint from 5th floor hall wall	
8	Paint from 5th floor north door frame	
9	Paint from 5th floor NE room wall	
10	Paint from 4th floor stairwell wall	
11	Paint from 4th floor SW room wall	
12	Paint from 20's gym wall	
13	Paint from 3rd floor conference room wall	
14	Paint from SE main floor room window	
15	Paint from main entrance wall	

Print Name	Signature	Company	Date	Time
Sampled by <u>Sean Butler</u>		<u>Asbestos NW</u>	<u>7-20-20</u>	<u>4pm</u>
Relinquish by <u>Sean Butler</u>		<u>Asbestos NW</u>	<u>7-27-20</u>	<u>3:25pm</u>

Office Use Only

Print Name	Signature	Company	Date	Time
Received by <u>Kelly Allen</u>		<u>NVL</u>	<u>7/27/2020</u>	<u>15:30</u>
Analyzed by				
Called by				
Faxed/Email by				

July 30, 2020

Sean Butler

Asbestos NW

30620 Pacific Highway S #103
Federal Way, WA 98003



NVL Batch # 2012645.00

RE: Total Metal Analysis
Method: EPA 1311/7000B Lead by FAA <TCLP>
Item Code: TCLP-1

Client Project: ASC 1
Location: 2765 Rockefeller Ave Everett, WA 98201

Dear Mr. Butler,

NVL Labs received 2 sample(s) for the said project on 7/27/2020. Preparation of these samples was conducted following protocol outlined in EPA 1311/7000B, unless stated otherwise. Analysis of these samples was performed using analytical instruments in accordance with EPA 1311/7000B Lead by FAA <TCLP>. The results are usually expressed in mg/L and ppm. Test results are not blank corrected.

For recent regulation updates pertaining to current regulatory levels or permissible exposure levels, please call your local regulatory agencies for more detail.

At NVL Labs all analyses are performed under strict guidelines of the Quality Assurance Program. This report is considered highly confidential and will not be released without your approval. Samples are archived after two weeks from the analysis date. Please feel free to contact us at 206-547-0100, in case you have any questions or concerns.

Sincerely,

A handwritten signature in black ink, appearing to read "Shalini Patel".

Shalini Patel, Lab Supervisor



Enc.: Sample results



Phone: 206 547.0100 | Fax: 206 634.1936 | Toll Free: 1.888.NVL.LABS (685.5227)
4708 Aurora Avenue North | Seattle, WA 98103-6516



Analysis Report


Toxicity Characteristic Leaching Procedure - Lead (Pb)

Client: Asbestos NW
 Address: 30620 Pacific Highway S #103
 Federal Way, WA 98003

Batch #: 2012645.00
 Matrix: Bulk
 Method: EPA 1311/7000B
 Client Project #: ASC 1
 Date Received: 7/27/2020
 Samples Received: 2
 Samples Analyzed: 2

Attention: Mr. Sean Butler
 Project Location: 2765 Rockefeller Ave Everett, WA 98201

Lab ID	Client Sample #	RL mg/ L	Results in mg/L	Results in ppm
20085969	1	0.5	< 0.5	< 0.5
20085970	2	0.5	1.5	1.5

Sampled by: Client Analyzed by: Ruth Schumaker Reviewed by: Shalini Patel	Date Analyzed: 07/29/2020 Date Issued: 07/30/2020	 _____ Shalini Patel, Lab Supervisor
---	--	---

mg/ L =Milligrams per liter
 ppm = parts per million

RL = Reporting Limit
 '<' = Below the reporting Limit

Note : Method QC results are acceptable unless stated otherwise.
 Unless otherwise indicated, the condition of all samples was acceptable at time of receipt.

LEAD LABORATORY SERVICES



Company Asbestos NW Address 30620 Pacific Highway S #103 Federal Way, WA 98003 Project Manager Mr. Sean Butler Phone (253) 941-4343	NVL Batch Number 2012645.00 TAT 1 Day AH No Rush TAT Due Date 7/29/2020 Time 1:10 PM Email seanb@asbestosnw.com Fax
---	---

Project Name/Number: ASC 1 **Project Location:** 2765 Rockefeller Ave Everett, WA 98201

Subcategory Flame AA (FAA)
Item Code TCLP-1 EPA 1311/7000B Lead by FAA <TCLP>

Total Number of Samples 2 **Rush Samples** _____

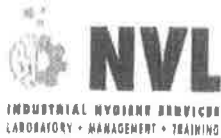
	Lab ID	Sample ID	Description	A/R
1	20085969	1		A
2	20085970	2		A

	Print Name	Signature	Company	Date	Time
Sampled by	Client				
Relinquished by	Drop Box				

Office Use Only	Print Name	Signature	Company	Date	Time
Received by	Kelly AuVu		NVL	7/27/20	1530
Analyzed by	Ruth Schumaker		NVL	7/29/20	
Results Called by					
<input type="checkbox"/> Faxed <input type="checkbox"/> Emailed					

Special Instructions: Received completed COC and CC payment 7/28 at 1310 -KA

Date: 7/28/2020
 Time: 1:43 PM
 Entered By: Kelly AuVu



**METALS
CHAIN OF CUSTODY**

Turn Around Time

- 2 Hour
- 4 Hours
- 8 Hours
- 2 Days
- 3 Days
- 4 Days
- 5 Days
- 6-10 Days

Please call for TAT less than 24 Hours

Company Asbestos Northwest
 Address 30620 Pacific Hwy S #103
Federal Way WA 98003
 Phone 253 941 4343

Project Manager Sean Butler
 Cell ()
 Email seanb@asbestosnw.com
 Fax ()

Project Name/Number ASC 1 Project Location 2765 Rockefeller Ave Everett WA 98201

- | | | | | | | |
|--|-------------------------------------|---|--|-------------------------------|-----------------------------------|--|
| <input checked="" type="checkbox"/> Total Metals | <input type="checkbox"/> FAA (ppm) | <input type="checkbox"/> Air Filter | <input type="checkbox"/> Paint Chips (%) | <input type="checkbox"/> Soil | RCRA 8 | RCRA 11 |
| <input checked="" type="checkbox"/> TCLP | <input type="checkbox"/> ICP (PPM) | <input type="checkbox"/> Paint Chips (cm) | <input type="checkbox"/> Dust Wipes | | <input type="checkbox"/> Barium | <input type="checkbox"/> Chromium |
| | <input type="checkbox"/> GFAA (ppb) | <input type="checkbox"/> Drinking Water | <input type="checkbox"/> Waste Water | | <input type="checkbox"/> Arsenic | <input checked="" type="checkbox"/> Lead |
| | <input type="checkbox"/> CVAA (ppb) | <input type="checkbox"/> Other | | | <input type="checkbox"/> Selenium | <input type="checkbox"/> Cadmium |
| | | | | | | <input type="checkbox"/> Copper |
| | | | | | | <input type="checkbox"/> Zinc |
| | | | | | | <input type="checkbox"/> Other |

Reporting Instructions email to sean
 Call () Fax () Email seanb@asbestosnw.com

Total Number of Samples 2

Sample ID	Description	A/R
1	TCLP north building	
2	TCLP south Building	
3		
4		
5		
6		
7		
8		
9		
10		
11		
12		
13		
14		
15		

	Print Name	Signature	Company	Date	Time
Sampled by	Sean Butler		Asbestos NW	7-20-20	4pm
Relinquish by	Sean Butler		Asbestos NW	7-20-20	3:25 pm

Office Use Only

	Print Name	Signature	Company	Date	Time
Received by			NVL	7/27/2020	15:25 PM
Analyzed by					
Called by					
Faxed/Email by					



METALS CHAIN OF CUSTODY

Turn Around Time
 2 Hour 4 Hours 24 Hours
 2 Days 3 Days 4 Days
 5 Days 6-10 Days
 Please call for TAT less than 24 Hours

Company Asbestos Northwest
 Address 30620 Pacific Hwy S #103
Federal Way WA 98003
 Phone 253 941 4343

Project Manager Sean Butler
 Cell () -
 Email Seanb@asbestosnw.com
 Fax () -

Project Name/Number	Project Location
---------------------	------------------

- | | | | | | | |
|--|-------------------------------------|---|--|-------------------------------|-----------------------------------|-----------------------------------|
| <input type="checkbox"/> Total Metals | <input type="checkbox"/> FAA (ppm) | <input type="checkbox"/> Air Filter | <input type="checkbox"/> Paint Chips (%) | <input type="checkbox"/> Soil | RCRA 8 | RCRA 11 |
| <input checked="" type="checkbox"/> TCLP | <input type="checkbox"/> ICP (PPM) | <input type="checkbox"/> Paint Chips (cm) | <input type="checkbox"/> Dust Wipes | | <input type="checkbox"/> Barium | <input type="checkbox"/> Chromium |
| | <input type="checkbox"/> GFAA (ppb) | <input type="checkbox"/> Drinking Water | <input type="checkbox"/> Waste Water | | <input type="checkbox"/> Arsenic | <input type="checkbox"/> Mercury |
| | <input type="checkbox"/> CVAA (ppb) | <input type="checkbox"/> Other | | | <input type="checkbox"/> Lead | <input type="checkbox"/> Zinc |
| | | | | | <input type="checkbox"/> Selenium | <input type="checkbox"/> Cadmium |
| | | | | | | <input type="checkbox"/> Other |

Reporting Instructions email to sean
 Call () - Fax () - Email Seanb@asbestosnw.com

Total Number of Samples 2

Sample ID	Description	A/R
1	TCLP north building	
2	TCLP south Building	
3		
4		
5		
6		
7		
8		
9		
10		
11		
12		
13		
14		
15		

	Print Name	Signature	Company	Date	Time
Sampled by	Sean Butler		Asbestos NW	7-20-20	4pm
Relinquish by	Sean Butler		Asbestos NW	7-20-20	3:25 pm

Office Use Only

	Print Name	Signature	Company	Date	Time
Received by			NVL	7/27/2020	15:20:03
Analyzed by					
Called by					
Faxed/Email by					