

Residential/Office Development Opportunity

Incredible Downtown
Seattle Location



© Aerolist

- 13,795 SF parcel located in vibrant north Belltown, just steps from Seattle Center, the Olympic Sculpture Park, shopping, dining, and minutes from downtown Seattle and rapidly growing South Lake Union.

Offered Exclusively by



CENTURYPACIFIC, L.P.

Steven Wood
+1 206 757 8890
stevenwood@dwt.com

Michael Finch
+1 206 757 8895
michaelfinch@dwt.com

We are pleased to present the opportunity to acquire this 13,795 sf parcel located in one of Seattle's most sought-after locations.

The site is currently a surface parking lot, but is zoned to accommodate up to 12 floors of residential development. A new building on the site would enjoy views of Seattle Center, the Space Needle, and Elliott Bay to the west.

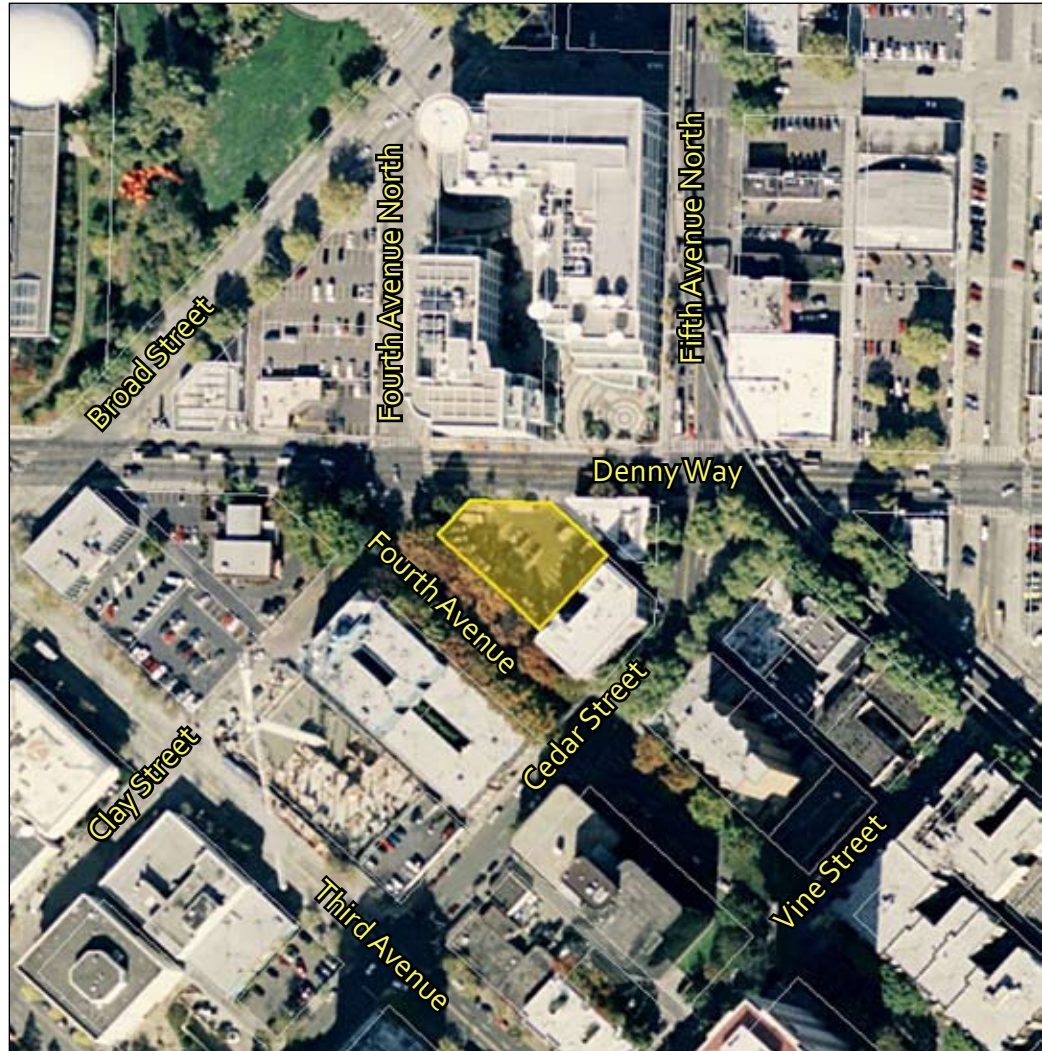
This outstanding location lies at the intersection of three of Seattle's fastest-growing neighborhoods: South Lake Union, Belltown, and Lower Queen Anne, and is surrounded by shopping, dining, recreation and other amenities. It also enjoys excellent access to transit and freeways.



CENTURYPACIFIC, L.P.

1201 Third Avenue, Suite 1680
Seattle, WA 98101

- Currently zoned DMR/125/65, allowing 125 feet of height for a residential development or 65 feet for office
- Utility services already in place
- Convenient access to I-5, Highway 99, and immediately adjacent to Denny Way
- Highly accessible by mass transit: 10 major bus routes and the Monorail stop within a 2 block radius of the site
- Adjacent to Fisher Plaza, Seattle Center and the Gates Foundation Campus



For more information please contact:

Steven Wood
+1 206 757 8890
stevenwood@dwt.com

Michael Finch
+1 206 757 8895
michaelfinch@dwt.com

Neither the seller, its shareholders, partners, members or affiliates makes any representations or warranties with regard to the accuracy or completeness of the information contained herein. CenturyPacifc, L.P. has conducted a limited review of the informatin contained in this memorandum, but has not independently verified the accuracy or completeness thereof. CenturyPacifc, L.P. does not represent or warrant the accuracy or completeness of the information contained in this memorandum. Nothing contained in this memorandum should be construed as a representation by any person or entity concerning the property. Each potential buyer shall conduct and rely solely upon its own due dilligence.